

NEW YORK - ALBANY

FCC - REGION 30

800 MHZ REGIONAL PLANNING COMMITTEE



PUBLIC SAFETY COMMUNICATIONS PLAN

MARCH 30, 1990

- REGIONAL PLAN -
THE NEW YORK-ALBANY RADIO PLANNING COMMITTEE
(FCC-REGION 30)

Table of Contents

	<u>Page No.</u>
<u>SCOPE</u>	1
Introduction	1
Purpose	2
 <u>AUTHORITY</u>	 3
Regional Planning Committee	3
Eligible Agency	3
Participating Agency	4
Agency Representative	4
Voting	4
Listing of Persons who have been Credentialed	5
Challenges to Credentials	5
Committees	5
National Inter-relationships	6
Federal Interoperability	6
Regional Plan Update Committee	7
 <u>SPECTRUM UTILIZATION</u>	 9
Region Defined	9
Usage Guidelines	10
Reassignment of Frequencies	13
Supplement to the Application Form	15
 <u>COMMUNICATIONS REQUIREMENTS FOR INTEROPERABILITY</u>	 16
Use of the Common Channels	16
Area of Operation and Participating Agencies	18
Operating Procedures	18
Network Operating Method	19

Table of Contents

<u>COMMUNICATIONS REQUIREMENTS FOR INTEROPERABILITY</u>	(cont'd.)
Transmitter Time-Out Timers	20
Long Range Communications during Regional/National Emergencies	20
Cellular Telephone and RF Interface	21
Expansion of Existing Systems	22
Coordination with Adjacent Regions	23
 <u>IMPLEMENTATION AND PROCEDURES</u>	 24
Notification	24
Frequency Allocation Process	24
Appeal Process	29
 <u>CHANNEL ASSIGNMENT TABLE</u>	 31
TAC-1 thru TAC-4 Channel Assignment by County	31
Channel Assignments by Applicant / County	34
Channel Assignments by Applicant / County below 100 KM. Canadian Treaty Impact Zone	35
Channel Requirements by Applicant / County within 100 KM. Canadian Treaty Impact Zone	38
 <u>APPENDICES</u>	
A - Evaluation Matrix	A1
B - Population in the Regional Planning Area	B1
C - Population Density in the Regional Planning Area	C1
D - Allocation Point Value	D1
E - Regional Planning Area (Map)	E1
F - Frequency Assignment Methodology	F1
G - Committee Members	G1
H - Notification List	H1
I - Participating Agencies	I1
J - Coordination Letters - Adjacent Regions	J1

- REGIONAL PLAN -
THE NEW YORK-ALBANY RADIO PLANNING COMMITTEE
(FCC-REGION 30)

SCOPE

Introduction

When the Federal Communications Commission announced the 800 MHz allocation of reserve radio frequencies to Public Safety Radio Services and Special Emergency Radio Services (SERS) in July 1986, they mandated that a National Plan outlining the use of public safety radio frequencies must be in place before any agency would receive channels from this new allocation. As part of this mandate, Regional Plans conforming to the National Plan were to be developed. A Regional Plan for radio spectrum usage by public safety agencies in the New York State area was written by members of the Region 30 Radio Planning Committee. This group, representing a cross-section of public safety radio users in the Region 30 area, has among its members, the Associated Public-Safety Communications Officers, Inc. (APCO) local frequency advisor for this area.

See Appendix G.

Purpose

The Regional Plan was developed to insure that maximum public benefit be derived from all radio communication systems used by eligibles that come under FCC rules for Public Safety Radio Services and SERS. The Plan was established with the objective of insuring that unassigned frequencies would be distributed in an equitable fashion with the priority given to those public safety agencies that are primarily responsible for the protection of life and property and that assigned frequencies were being utilized in the most efficient manner.

AUTHORITY

Regional Planning Committee

Authority for the Regional Planning Committee to carry out its assigned tasks is derived from the Federal Communications Commission (FCC Report and Order, Docket 87-112).

Eligible Agency

Any entity, agency, or sub-agency which is eligible to be licensed under Subparts B or C of Part 90 of the FCC Rules and Regulations, Federal Agencies, and other interested parties are eligible for membership on this Regional Planning Committee. Each agency or sub-agency of a governmental entity which is entitled to hold a license in one or more of the Radio Services listed under Subparts B or C of Part 90 shall be considered to be a separate entity up to a maximum of one agency or sub-agency for each Radio Service listed under those subparts. For example, a city could have separate entities for Local Government, Police, Fire, Highway Maintenance, Forestry Conservation, and Special Emergency.

Participating Agency

Any ELIGIBLE AGENCY who has had a representative attend at least one previous meeting of the Region 30 Planning Committee shall be a Participating Agency.

Agency Representative

Agency Representative is a person who is employed by a PARTICIPATING AGENCY, or in the case of a PARTICIPATING AGENCY which is comprised solely of volunteers, any person who is a member in good standing of that agency. A person may represent only one PARTICIPATING AGENCY at a Regional Planning Committee Meeting.

Voting

Except for Federal Agencies and some Commercial Entities, each PARTICIPATING AGENCY who has an AGENCY REPRESENTATIVE in attendance at the Regional Meeting shall be allowed one vote on any matter brought before the Committee for a vote. If there is more than one AGENCY REPRESENTATIVE from a PARTICIPATING AGENCY present at the meeting, they must decide among themselves on how their agency vote is to be cast. Federal Agencies and Commercial Entities, not eligible to be licensed under Subparts B or C of Part 90 of the Commissions Rules, shall not be entitled to vote.

Listing of Persons and Agencies who have been Credentialed

The Secretary of the Region 30 Planning Committee shall REQUIRE, as part of the "sign-in" procedure for any Regional Meeting, the Name of the individual and the Name of the Agency (including any sub-agency, such as the Police Department) that the individual is representing. The Secretary shall keep a separate listing by PARTICIPATING AGENCY of all individuals who have been credentialed for that Agency.

Challenges to Credentials

If the credentials of any individual or agency are challenged by a member of the Regional Committee, the matter shall be referred to the members of the Administrative Committee who are present at the meeting. The Administrative Committee shall make a recommendation to the Chairman of the Regional Planning Committee as to the proper agency representative and that the matter be brought before the entire Regional Planning Committee for resolution.

Committees

There are four Committees, Administrative, Interoperability, Technical, and Regional Plan Update.

National Interrelationships

The Regional Plan is in conformity with the National Plan. If there is a conflict between the two plans, the National Plan will govern. It is expected that Regional Plans for other areas in the country may differ from the Plan for this area due to dissimilar situations. By officially sanctioning the Plan, the FCC agrees to its conformity to the National Plan. Nothing in the Plan is to interfere with the proper functions and duties of the organizations appointed by the FCC for frequency coordination in the Private Land Mobile Service but, rather, it provides procedures that are the consensus of the Public Safety Radio Service user agencies in the Region. If there is a perceived conflict, then the judgment of the FCC will prevail.

Federal Interoperability

Interoperability between Federal, State and Local Governments during both daily and disaster operations will take place, primarily, on the five common channels identified in the National Plan. Additionally, through the use of S-160 or equivalent agreements, a licensee may permit Federal use of a non-Federal communications system. Such use, on other than the five identified common channels, is to be in full compliance with FCC requirements for government use of non-government frequencies (Title 47 CFR, sec 2.103). It is permissible for a non-Federal

government licensee to increase channel requirements to account for up to a 2% increase in mobile units, provided that written documentation from Federal agencies supports at least that number of increased units.

Regional Plan Update Committee

With the approval of the Regional Planning Committee, the Chairman shall appoint a Regional Plan Update Committee (RPUC). This Committee will remain in place to recommend changes in the Regional Plan to the FCC and provide a mechanism for inter-regional resolution of problems which arise.

AMENDED
7/24/95
ACCEPTED
BY FCC
11/22/95

"The standing membership of the RPUC shall consist of the APCO designated local frequency advisor for the Regional Planning Area, two members each representing the four geographic areas of Region 30 - Albany, Binghamton, Syracuse, and Plattsburgh (8 members). From time to time, the RPUC Chairman may appoint a member(s)-at-large. Subsequent to the initial RPUC appointments, all future RPUC appointments will be subject to majority approval of current RPUC membership. In no case shall any radio service have a voting membership greater than 49%."

"Subject to majority approval, other individuals may serve on the RPUC only in a non-voting status. The RPUC Chairman may exclude the presence of such members during any RPUC executive session."

The following rules and procedures shall be established:

- o elect a Chairman
- o develop a mechanism to fill Committee vacancies
- o with FCC approval modify Committee membership

11/22/95
3/30/90

- o set response time to process received applications
for frequencies
- o publish meeting schedule
- o determine Committee voting standards
- o develop applicant appeal process
- o audit implementation of those systems, subject to the
Plan
- o enact policy for frequency give-backs
- o maintain coordination with neighboring regional
Committees
- o participate in the annual meeting of adjacent regional
Committees
- o promulgate other rules and procedures as required

It should be noted that the FCC will not fund any
expenses incurred by the RPUC.

SPECTRUM UTILIZATION

This portion of the Plan provides a basis for proper spectrum utilization. Its purpose is to guide the Committee in their task of evaluating the implementation of radio communication systems within the Region.

Region Defined

The total population of the area as outlined below is estimated to be greater than 3,081,861 people; 18% of the entire State of New York. The land area totals 29,767 square miles; 62% of the entire State of New York.

Within this region are a plethora of jurisdictions ranging from state governments, to quasi-municipal organizations, crossing County lines, towns, villages, water districts, fire districts, etc., with many involved in public safety. Their involvement extends from search and rescue during crisis to immediately responding to the replenishment and repair of roadways, lights, power, etc. See Appendix E for a list of the counties comprising this Region.

Usage Guidelines

All systems operating in the Region having five or more channels will be required to be trunked. Those systems having four or less channels may be conventional.

The FCC in its Report and Order states, "Exceptions will be permitted only when a substantial showing is made that alternative technology would be at least as efficient as trunking or that trunking would not meet operational requirements. Exceptions will not be granted routinely, however, and strong evidence showing why trunking is unacceptable must be presented in support of any request for exception."

Systems of four or less channels operating in the conventional mode who do not meet FCC loading standards will be required to share the frequency on a non-exclusive basis.

Public safety communications at a State level, as it impacts the Region, will be reviewed by the Committee. Statewide public safety agencies will submit their communications plans for impact approval if they utilize communications systems within the Region, and those portions of such systems must be compatible with the Regional Plan.

The next level of communication coverage will be a county/multiple municipality area. Those systems that are

designed to provide area communication coverage must demonstrate their need to require such wide area coverage. Communication coverage beyond the bounds of a jurisdictional area of concern cannot be tolerated unless it is critical to the protection of life and property. If the 800 MHz trunked radio technology is utilized, the system design must include as many county/multiple municipality government public safety radio users as can be managed technically.

The county/multiple municipality agency or agencies, depending upon systems loading and the need for multiple systems within an area, must provide inter-communications between areawide systems. In a multi-agency environment, a lead agency using 800 MHz spectrum must implement the Common Channels in this band, as mandated by the National Plan. Such implementation must be reviewed and approved by the Committee.

Town communications for public safety purposes must provide only the communications needed within its boundaries. However, if the total number of radios in service does not reach minimum loading criteria for a trunked system, that town must consider utilizing the next higher system level if 800 MHz trunked radio is available in the area. As those higher level systems reach capacity, the smaller system communicators in the public

safety service must then consider uniting their communications efforts to formulate one large system or forfeit use of the limited 800 MHz spectrum.

Where smaller conventional 800 MHz needs are requested, those frequencies to be utilized must not interfere with the region's trunked systems. The 800 MHz trunked radio system is to be considered the higher technology at this time and in greater compliance with FCC guidelines. The amount of interference that can be tolerated depends on the service affected. Personal life and property protection shall receive the highest priority and disruptive interference with communications involved in these services in an area shall not be tolerated. Any co-channel interference within an authorized area of coverage will be examined on a case by case basis.

A requesting applicant for radio communications in the 800 MHz public safety services in this Region will be required to provide loading criteria information for its proposed system. The provisions of this Regional Plan must be used as a guide for establishing any new systems. Strict adherence for limiting area of coverage to the boundaries of the applicant's agency's jurisdiction must be observed. Overlap or extended coverage must be minimized even where systems utilizing 800 MHz trunked radio are proposing to intermix systems for cooperative and/or mutual aid purposes.

Antenna heights are to be limited to provide only the necessary coverage for a system. When antenna locations are restricted to only the "high ground", transmitter outputs and special antenna patterns must be employed to produce the necessary coverage with the proper amount of ERP. All necessary precautions will be taken to gain maximum reuse of the limited 800 MHz spectrum.

As part of this plan, distances between transmitter for co-channel reuse will not be held to seventy (70) mile separation. Separation of co-channel transmitters will be determined by the coverage needs of the applicant, natural barriers for separation, antenna patterning and limited ERP's where possible. System tests and/or propagation studies should also be provided to establish minimum distances for separation.

Reassignment of Frequencies

It is anticipated that, in most cases, frequencies presently utilized by a licensee will be turned back for reassignment. The FCC authorized frequency coordinators will be responsible for assignment of the channels to the various agencies awaiting channels in the lower frequency bands. Normal coordination procedures will be followed with these turned back channels except that the applicant evaluation criteria established in the National Plan and further defined in this Regional Plan is to be considered by the applicable frequency coordinator.

In such cases where specific channels are required by numerous applicants, the applicant evaluation matrix of this plan will be utilized by the frequency coordinator. In all cases, area of coverage criteria and channel loading criteria will be applied, except upon unique circumstances after receiving a waiver from the Regional Planning Committee. It is not consistent with the goals and objectives of this Region to permit the direct reassignment of radio frequencies between agencies. All frequencies are to be returned to their respective pools to be assigned to the most public beneficial use. Similarly, an agency should not be able to "farm down" frequencies to other services within their political structure simply to take advantage of surplus equipment. The need for communications by such an agency may be outweighed by the needs of another political subdivision.

This Regional Plan will consider for planning purposes the communication needs of all current eligibles under the FCC's Public Safety Radio Services and Special Emergency Radio Services. Additionally, this Regional Plan may consider the communication needs of those public safety service associated operations as the Regional Planning Committee may deem necessary and desirable for local area needs, such as interoperability with public safety communication networks in other frequency bands.

Supplement to the Application Form

With each application form (modified APCO Form FDR2) submitted initially to the Committee Chairman, the applicant shall also supply the following supplemental information:

- o Details of engineering survey showing radio coverage will not exceed applicants minimum requirements.
- o Explain how system will be used to communicate with other services in other bands.
- o Explain any budget commitment that has been made for the proposed system.
- o Explain how system will interface with long distance radio communications such as amateur radio, satellite communications, and/or long-range emergency preparedness communications systems.
- o Statement of need for installing a new 800 MHz system.
- o Explain and certify that the applicant's agency will comply with the common channel implementation requirements.
- o Provide details of all existing channels used by the applicant within 70 miles of the proposed system.

COMMUNICATIONS REQUIREMENTS FOR INTEROPERABILITY

Use of the Common Channels

The implementation of the common channels, designated by the National Plan, will utilize a two tiered network.

1) The National calling channel (601) will be implemented as a full mobile relay. This plan will promote the installation of wide area coverage transmitters in order to maximize regional coverage. Large system users (5 channels or more) of 800 MHz may be required to provide satellite receiver feeds into this wide area transmitter's area of coverage. Each agency licensed pursuant to this plan will be required to operate a control station for the purpose of monitoring and rendering assistance on the calling channel unless it can demonstrate that adequate coverage is already provided by another licensee. Each large system user (5 channels or more) of 800 MHz may be required to sponsor one or more localized mobile relays in order to provide coverage, equivalent to its own system, throughout its licensed service area.

During actual transmissions, the channel will be referred to as "CALL." Transmissions on this channel will be in the conventional non-trunked mode utilizing CTCSS tone 5A (156.7 Hz) and plain English; encryption is not permitted.

2) The four tactical channels (639, 677, 715, 753) will be geographically assigned throughout the region. Each large system user (5 channels or more) of 800 MHz may be required to sponsor one or more localized mobile relays in order to provide coverage, equivalent to its own system, throughout its licensed service area. This will result in a fixed number of working channels in a specific geographic area; depending upon need, more than one of these channels may be implemented. The placement and coverage of these systems will be planned in such a manner as to permit reuse several times within the region if necessary. Talk-around on all four tactical channels will provide additional localized communications as appropriate.

These channels are designated for inter-agency use only.

During actual transmissions, these channels will be referred to as "TAC1" through "TAC4." Transmissions will be in the conventional non-trunked mode utilizing CTCSS tone 5A (156.7 Hz) and plain English. Encryption is only permissible when utilizing hardware capable of receiving encrypted and non-encrypted transmissions.

Area of Operation and Participating Agencies

The total area of operation shall encompass the Region as defined elsewhere in the plan and shall extend outward to include the total system area of any system which is licensed pursuant to this plan.

Participants in the interoperable channels include Federal, State and Local Public Safety and Emergency Management Agencies. Police, Fire, Emergency Medical Services and Local Government services will be the primary users of the common channels.

While all eligibles may participate in the use of the national interoperability channels using mobile and portable equipment, in accordance with operating procedures set forth herein, within this region only governmental entities will be permitted to license fixed stations on the national interoperable channels.

Operating Procedures

Users of the system will come from various backgrounds and disciplines, each having their own language and terminology. As previously stated, plain English will be utilized in all transmissions.

National Calling Channel

This channel shall be referred to as "CALL" during actual transmissions and shall be utilized to contact other agencies in the region. It shall not be utilized as a continuous working channel. Once contact is made between agencies, an assigned or agreed upon tactical channel shall be utilized for continued communications.

Tactical Channels

These channels shall be referred to as "TAC1" through "TAC4" during actual transmissions. Incidents requiring multi-agency participation will utilize these channels as directed by the control agency assuming responsibility for an incident or geographic area.

Network Operating Method

A network will be established on the calling channel, "CALL." This network will be wide area to cover large sections of the Region. Multiple networks will be required to fully cover the outlying areas of the region. Multi-state coverage networks will be monitored by selected agencies.

Communications capabilities on "TAC1" - "TAC4" will be implemented by agencies who are designated on a distributed coordinated basis. Every geographic section of the region is intended to be covered by the calling channel and at least one of the tactical channels. Mobile relay design on the tactical channels will be on a limited coverage basis to permit reuse of the channels several times within the region and in adjacent regions.

Transmitter Time-Out Timers

Any communications plan which requires the development of multiple base stations with capability on one or more common channels, carries associated risks. Pursuant to this Plan, within this region, transmitter "time-out timers" will be required on all transmitters.

Long-Range Communications During Regional/National Emergencies

During incidents of major proportions such as earthquakes and radiologic accidents, there is often a need for long-range communications into and from the incident site. In such situations, alternate radio communications plans should be addressed by major communications agencies within this region. These agencies should integrate the appropriate interface to the five national common channels as a minimum.

Such long distance communications should integrate local chapters or offices of agencies such as the Amateur Radio Emergency Services (ARES), the Radio Amateur Civil Emergency Service (RACES), the Military Affiliated Radio System (MARS) and satellite communications facilities. Local government radio service channels in the 2 to 8 MHz bands and Emergency Preparedness communications systems such as Operation SECURE may be utilized as well.

In times of regional or National emergency, interface to the national channels may be by any available means: automatic or manually controlled direct retransmissions or simple repetition of messages. Such long range communications capabilities should be incorporated as part of the communications plans of major communications agencies within this region.

Cellular Telephone and RF Interface

The cellular telephone service is a rapidly developing and expanding service in this Region. Such systems have facilities and cell capacity more specifically designed for the longer transmission durations associated with telephone conversations. There are limited public safety applications for this service, such as the use of cellular biotelemetry in the provision of emergency medical services. Such mobile telephone service currently provides a "one-to-one" communication link, not a fleet communication directed at multiple units, as is typical of most public safety applications.

Nevertheless, there is clearly a limited role for the interconnection of the cellular telephone network into the common tactical channels.

In this Region, cross-connected communications into the four tactical channels may be utilized but only under manual control by a control point.

Under no circumstances will cross-connected communications into the national calling channel be permitted.

Expansion of Existing Systems

Existing systems that are to be expanded to include the frequency bands of 821-824/866-869 MHz will have their mobile radios "grandfathered" provided that they are modified in conformance with the Memorandum Opinion and Order, FCC Docket 87- 112. (This only applies to mobile equipment which was either in a licensee's possession, or had been placed on order prior to September 7, 1988) Existing base stations in the frequency bands 806-821/ 851-866 may not be used in the frequency bands 821-824/866-869.

Coordination with Adjacent Regions

The interoperability aspects of this Plan are consistent with those proposed in Region 8, New York - Metropolitan (Tri-State Radio Planning Committee), Region 19, Maine, New Hampshire, Vermont, Massachusetts, Rhode Island, and Connecticut (New England), and Region 28, Pennsylvania - East, et al. (Delaware Valley Regional Planning Committee).

As Region 55, New York - Buffalo, develops its Plan, both this Region's Plan and the appropriate members of our Committee will be available to ensure compatibility. We anticipate inter-regional cooperation in the implementation of the common channels in areas which comprise our common borders.

IMPLEMENTATION AND PROCEDURES

Notification

All interested parties were invited to participate in the development of this Regional Plan. This notification was accomplished by the FCC issuing a Public Notice. In addition, the mobile communications print media were contacted by the "convenor" and made aware of the Committee's formulation. Also notified were State and Local Government Agencies concerned with emergency management as well as Federal Agencies responsible for National Security and Emergency Preparedness. See Appendix H.

Frequency Allocation Process

In performing the allocation process, the Committee used the algorithm, made available by APCO. (See Appendix F), for use as an aid to maximize spectrum utilization. The Committee also considered the results of a recent demographic study to determine the future needs of applicants (see Appendix B). Any system that may frequency impact a neighboring planning region has been coordinated by the respective Committee Chairmen of the affected regions.

The Plan incorporates a filing window concept which will provide for the evaluation of all applications for the available spectrum at the same time. (The Committee established September 1, 1989 as the closing of the first window.) The flow chart, entitled "Evaluation Matrix" (see Appendix A), shows the sequence of events that will be followed in the allocation of the 6 MHz of 800 MHz spectrum. This process follows the guidelines established under the National Plan:

The allocation is placed in the frequency pool (Block #1). If frequencies are available in the pool (a second iteration of the evaluation matrix could occur if all frequencies are not allocated on the first iteration), a window opening announcement is made (Block #2). The window period will be at least thirty days (Block #3 through Block #4) with late applications rejected (Block #5). Applications are received and reviewed during the window period by the local frequency advisor of the respective state from which the application originated (Block #6).

The Committee will consult with State Communications Planning Administrators, where they exist, to determine if the application is in compliance with State Plans (Block #7). An application that is not in compliance with an existing State Plan will be rejected at this point (Block #8) and returned to the applicant with an explanation of the reason(s) for rejection.

Having passed the tests of State Plan compliance and

the needs assessment, the Core Committee will apply the evaluation matrix (Block #9).

The implementation of the evaluation matrix will result in the award of a score for each application. That score is the total of the points awarded in seven categories, with a maximum possible score of 1000 points. Prior to the allocation of points for the seven categories, a needs assessment review is conducted (Block #10). The applicant submits a statement of need for the requested frequencies. This statement of need serves as an overview of the proposed system. The seven categories are as follows:

1. Service (Block #11) - maximum score 350 points.

Each of the eligible services has a predetermined point value (Appendix D). That point value is multiplied by ten (10) to determine the score for the Service Category. An applicant with multiple services will be scored on the basis of the percentage that each service represents of his total system. That is, a system that is 50% police and 50% local government (school administration) would be awarded the total of 50% of the point value for police plus 50% of the point value for school administration.

2. Intersystem Communications (Block #12) - maximum score 100 points.

The application is scored on the degree of interoperability.

that is demonstrated, with a range of points from 0 to 100. This category does not rate the application on the inclusion of the mandated five common channels for interoperability. This category does rate the application on his proposed ability to communicate with different levels of government and services during times of emergency.

3. Loading (Block #13) - maximum score 150 points.

Those applicants that have demonstrated they are part of a cooperative, multi-organization systems, will be scored on a range of 0 to 100 points depending upon the extent of the cooperative system. An expansion of an existing 800 MHz system will be scored on a range of 0 to 50 points, depending upon the degree of expansion. A system could be an expansion of an existing 800 MHz and a cooperative system as well and, as a result, receive the combined point values for these two sub-categories for a maximum value of 150 points.

4. Spectrum Efficient Technology (Block #14) - maximum score 100 points.

This category scores the applicant on the degree of spectrum efficient technology that the system demonstrates. A point value range of 0 to 100 points can be awarded for this category. A trunked system would be considered a spectrum efficient technology as well as any technological systems' feature which is designed to enhance the efficiency of the system and provide for the efficient use of spectrum.

5. Systems Implementation Factors (Block #15) - maximum score 100 points.

This category scores the applicant on two factors, budgetary commitment and planning completeness. The degree of budgetary commitment is scored on a range of 0 to 50 points. An applicant that demonstrates a high degree of commitment in funding the proposed system will receive the higher score. Each applicant will be scored on the degree of planning completeness with a range of scoring from 0 to 50 points. Applicants will be required to submit a timetable for the implementation of the communications system or systems.

6. Geographic Efficient (Block #16) - maximum point value of 100 points.

Each applicant will be scored on the level of geographic efficiency, scoring will be based upon two sub-categories, the ratio of mobiles to area covered and the channel reuse potential. The ratio of mobiles to area covered measures the level of efficient coverage that a system demonstrates. The higher the ratio (mobiles divided by square miles of coverage) the more efficient the use of the frequencies. The ratio of mobiles to area covered is scored on a scale of 0 to 50 points. Those systems which cover large geographic areas will have a greater potential for channel reuse and will, therefore, receive a high score in this sub-category. The level of channel reuse potential is scored on a scale of 0 to 50 points.

7. Givebacks (Block #17) - maximum score 100 points.

The applicant is scored in two sub-categories: the number of channels given back and the extent of availability of those channels to others. The greater the number of channels given back the higher the score will be, with range of points from 0 to 50. The greater the level of availability of the give backs the higher the score will be in the sub-category for availability to others, with range of points from 0 to 50.

Points are totaled for each application (Block #18) and the applications are prioritized by the Core Committee (Block #19). The frequency pool is allocated (Block #20), the Appendix to the Regional Plan is updated, The Plan is then sent to the FCC for review and approval, as outlined in the Report and Order, Docket 87-112 (Block #21). The applications are simultaneously coordinated by APCO. After this point, the FCC would grant the license(s) to the applicant (Block #23).

The licensee has three years to implement the system. Should system implementation not begin (award of contract) within a two year period, or if projected channel loading is not attained within three years after granting of license, the channels will be returned for re-allocation to others. Systems implementation is monitored by the local designated frequency advisor who determines if progress is made on the implementation of the system (Block #24). Monitoring of systems' implementation by the local designated frequency advisor will take place at a

minimum of six month intervals. If progress is made the system is ultimately implemented (Block #26). If progress is not made the licensee is warned of the consequences of his lack of progress (Block #27). The local designated frequency advisor continues to monitor progress on the implementation of the system (Block #28). If the continued monitoring indicates that progress is still not being made, the licensee is notified of pending action to withdraw the license (Block #29). The notified licensee can appeal this action (Block #30) or can allow the license to be withdrawn. If the allocated frequencies are withdrawn, they are added back to the frequency pool (Block #32) and the process starts a second iteration at Block #1.

Appeal Process

Throughout the frequency allocation process, applicants are given opportunities to appeal decisions which have caused rejection of their application. The appeal process has two levels: the full Region 30 Committee and the FCC. An applicant who decides to appeal a rejection should initiate that appeal immediately upon notification of rejection. In the event that an appeal reaches the second level, the FCC, their decision will be final and binding upon all parties.

- REGIONAL PLAN -

THE NEW YORK-ALBANY RADIO PLANNING COMMITTEE

(FCC-REGION 30)

TAC-1 thru TAC-4 CHANNEL ASSIGNMENT BY COUNTY

<u>COUNTY</u>	<u>PRIMARY</u>	<u>SECONDARY</u>
Albany	3	2
Broome	3	2
Cayuga	4	1
Chenango	4	1
Clinton	2	3
Columbia	1	4
Cortland	1	4
Delaware	1	4
Essex	4	1
Franklin	3	2
Fulton	3	2
Greene	4	1
Hamilton	1	4
Herkimer	2	3
Jefferson	2	3
Lewis	3	2
Madison	2	3
Montgomery	4	1
Oneida	4	1
Onondaga	3	2
Oswego	1	4
Otsego	3	2
Rensselaer	2	3
St. Lawrence	4	1
Saratoga	4	1
Schenectady	1	4
Schoharie	2	3
Tioga	1	4
Tompkins	2	3
Warren	3	2
Washington	1	4

NOTE A: Some systems will by their nature provide wider area of coverage than the boundaries of the County indicated in the table.

NOTE B: Emergency time constraints may require immediate communications using such wider areacoverage.

NOTE C: Reduced coverage to conform to this Plan, possibly using a local coverage tactical repeater, should be encouraged.

- REGIONAL PLAN -

THE NEW YORK-ALBANY RADIO PLANNING COMMITTEE

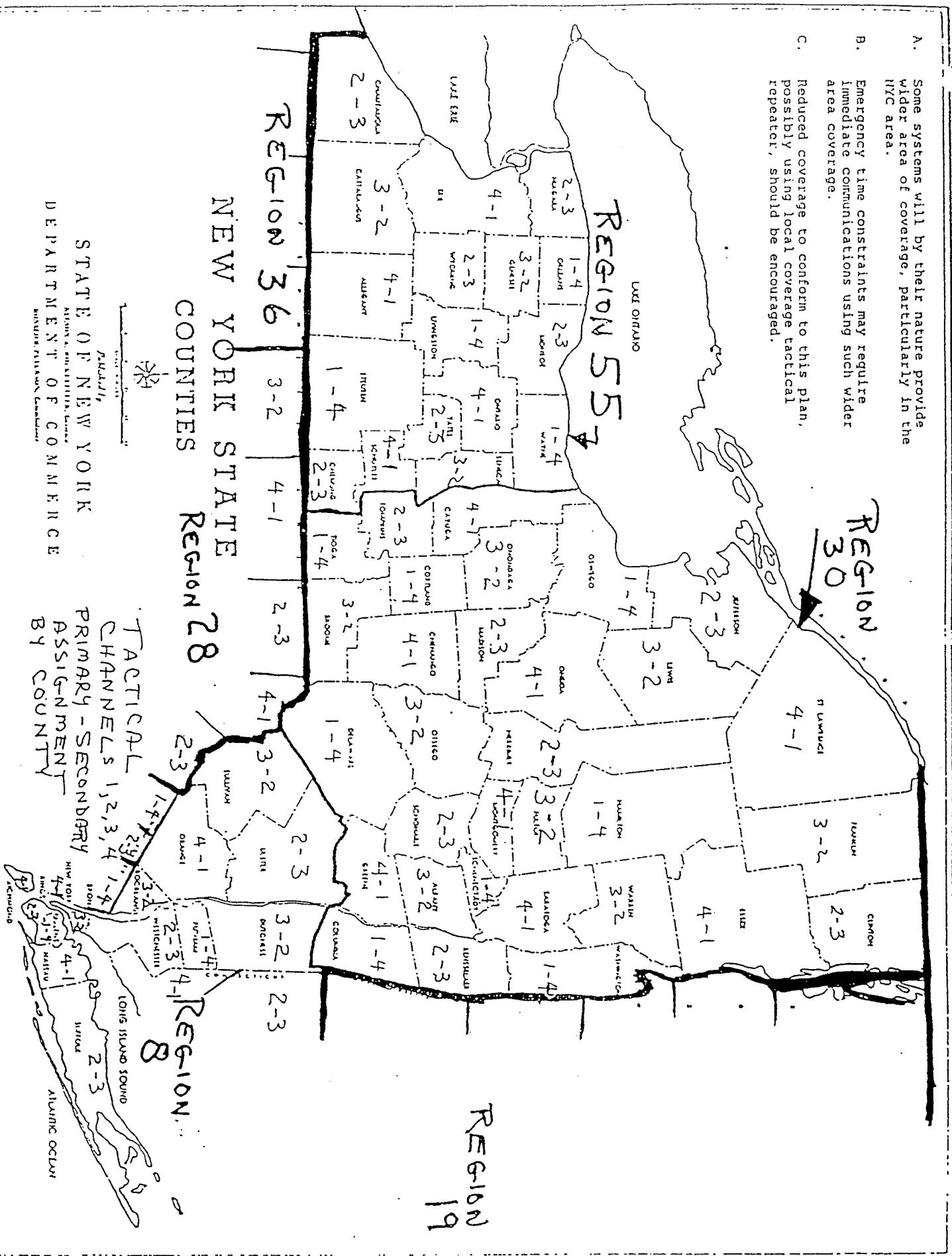
(FCC-REGION 30)

TAC-1 thru TAC-4 CHANNEL ASSIGNMENT BY COUNTY

- continued:

It is anticipated that common use of the National Mutual Aid Channels, CALL, TAC-1, TAC-2, TAC-3, AND TAC-4, will be approved by both Canada and the United States in the current treaty negotiations. Accordingly, this Region 30 Plan does not associate the 100 KM Impact Zone with these channel assignments.

- A. Some systems will by their nature provide wider area of coverage, particularly in the NYC area.
- B. Emergency time constraints may require immediate communications using such wider area coverage.
- C. Reduced coverage to conform to this plan, possibly using local coverage tactical repeater, should be encouraged.



- REGIONAL PLAN -

THE NEW YORK-ALBANY RADIO PLANNING COMMITTEE

(FCC-REGION 30)

CHANNEL ASSIGNMENTS BY APPLICANT / COUNTY

The APCO/CET computer program, originally designed by Motorola, was used to generate channel assignments shown in this Plan on 11/9/89. As channels were reserved for State-wide and Region-wide requirements of governmental entities within this Plan, so also channels were reserved in this Plan in anticipation of similar requirements in adjacent Plan areas and in Canada. Accordingly, channels 604, 605, 635, 636, 637, 638, 642, 643, 673, 674, 675, 676, 680, 681, 711, 712, 713, 714, 718, 719, 749, 750, 751, 752, 756, 757, 787, 788, 789, 790, 796, and 797, are reserved for "region-wide" uses, and their necessary guard channels, outside, but adjacent to this plan, which have not been previously assigned in the APCO/CET data base. It is the intent of this Plan to protect those uses in accordance with the protection criteria specified elsewhere in this Plan. Therefore, those channels could be used in the interior areas of Region 30 in the future as long as the protection criteria are met.

This plan took into account the same demographic criteria for adjacent Canadian Counties or Administrative Regions, within 100 miles of its border with the Region 30 part of the United States, having to set maximum channel quantities per County or Region only when the quantity of available channels was exceeded. While Canada is not part of this Plan, nor is the outcome of any treaty negotiation in this matter known at this time, the preceeding information is provided to explain the appearance of gaps in the frequency assignments which follow.

The following frequency specific plan covers only the part of Region 30 which is below the 100 KM Canadian Treaty Impact Zone as it is defined for the adjacent 800 MHz spectrum in FCC Rules and Regulations 90.619(b)(1) - Region 2.

After the frequency specific plan is a listing of those entities and Counties, which fall within the 100 KM Canadian Treaty Impact Zone, identifying their channel requirements. It should be noted that some Counties are intersected by this Zone boundary such that either:

1. all base stations are within the Zone, or
2. some of the base stations are within the Zone, or
3. none of the base stations are within the Zone, but mobiles may operate within the Zone.

Those channels which are requested for Region-wide or State-wide reserved use, or where the county is intersected by the Zone boundary, are listed by channel number, so that they can be identified as the same, both above and below the Zone boundary.

- REGIONAL PLAN -

THE NEW YORK-ALBANY RADIO PLANNING COMMITTEE

(FCC-REGION 30)

CHANNEL ASSIGNMENTS BY APPLICANT / COUNTY - continued:

In the case of New York State Police, the FCC Private Radio Bureau has been aware of their need for a State-wide uniform set of channel assignments since November 3, 1988, prior to the approval of any Regional Plans. The Region 8 Plan, accepted by FCC, included New York State Police channel requests, which are the basis for the same channels specified in the Region 30 Plan. These channels are positioned in the table of assignments so as to meet several criteria, including the shared use of guard channels with the National Mutual Aid channels so that spectrum can be most efficiently utilized. Low power channels for New York State Police are assigned for protected on-scene tactical communications and vehicular repeater use. To date, surrounding regional plans have allowed for protection of these channels for New York State Police along their boundaries with New York State, an important step toward establishing the desired uniform State-wide channel assignments.

Low Power Mobile Only Channels are restricted to a maximum of 7.5 Watts Effective Radiated Power.

Channels are assigned to counties on a projection basis of 1 channel per 25,000 population with a minimum of 5 trunking channels and 1 conventional channel. Channels which are not formally applied for may be reassigned to other applicants both within this Region or in an adjacent Region consistent with protection criteria. Due to the nature of Governmental system development, all channel assignments are considered to be "Slow Growth" in accordance with FCC Rules and Regulations 90.629.

CHANNEL ASSIGNMENTS BY APPLICANT / COUNTY

(BELOW 100 KM. CANADIAN TREATY IMPACT ZONE)

APPLICANT / COUNTY

CHANNELS ASSIGNED

ALL ELIGIBLES 830 : REGION-WIDE LOW POWER MOBILE ONLY.

ALL EMS ELIGIBLES
 822 : REGION-WIDE LOW POWER MOBILE ONLY.

ALL FIRE ELIGIBLES
 820 : REGION-WIDE LOW POWER MOBILE ONLY.

ALL POLICE ELIGIBLES:
 824 : REGION-WIDE LOW POWER MOBILE ONLY.

- REGIONAL PLAN -

THE NEW YORK-ALBANY RADIO PLANNING COMMITTEE

(FCC-REGION 30)

CHANNEL ASSIGNMENTS BY APPLICANT / COUNTY

(BELOW 100 KM. CANADIAN TREATY IMPACT ZONE)

- continued:

APPLICANT / COUNTY

CHANNELS ASSIGNED

NEW YORK STATE DEPARTMENT OF ENVIRONMENTAL CONSERVATION

794 : REQUESTED FOR REGION-WIDE.

NEW YORK STATE OFFICE OF EMERGENCY MANAGEMENT

792 : REQUESTED FOR REGION-WIDE.

NEW YORK STATE POLICE

602, 640, 678, 716, 754 : REQUESTED FOR STATE-WIDE.

826, 827, 828, 829 : REQUESTED FOR STATE-WIDE AND

LOW POWER MOBILE ONLY.

NOTE: STATE-WIDE REQUEST INVOLVES THREE
PLANNING REGIONS IN NEW YORK STATE;
REGION 8 PLAN HAS BEEN APPROVED AT
THIS TIME TOWARD THESE UNIFORM
CHANNEL ASSIGNMENTS.

Albany	609, 618, 630, 696, 699, 725, 728, 769, 786, 807, 814, 817
Broome	626, 629, 657, 660, 743, 774, 779, 803, 805
Cayuga	612, 656, 662, 731, 768, 815
Chenango	624, 650, 655, 738, 758, 801
Columbia	620, 652, 664, 721, 741, 766
Cortland	618, 620, 644, 748, 784, 807
Delaware	615, 622, 646, 761, 781, 809
Essex	609, 611, 629, 764, 785, 817
Fulton	623, 626, 656, 759, 779, 803
Greene	662, 685, 706, 736, 773, 775
Hamilton	670, 692, 721, 747, 771, 777
Herkimer	613, 633, 653, 697, 730, 745

- REGIONAL PLAN -

THE NEW YORK-ALBANY RADIO PLANNING COMMITTEE

(FCC-REGION 30)

CHANNEL ASSIGNMENTS BY APPLICANT / COUNTY

(BELOW 100 KM. CANADIAN TREATY IMPACT ZONE)

- continued:

<u>APPLICANT / COUNTY</u>	<u>CHANNELS ASSIGNED</u>
Madison	630, 658, 682, 778, 804, 814
Montgomery	651, 672, 694, 765, 767, 800
Oneida	608, 617, 661, 663, 665, 684, 742, 763, 769, 798, 816
Onondaga	606, 610, 627, 632, 667, 669, 671, 686, 689, 691, 736, 740, 744, 746, 760, 773, 775, 780, 782, 818
Otsego	611, 687, 734, 783, 785, 811
Rensselaer	658, 660, 682, 702, 745, 748, 799
Saratoga	612, 616, 632, 644, 686, 735, 784, 812
Schenectady	614, 634, 667, 669, 732, 743, 776
Schoharie	607, 628, 648, 689, 691, 740
Tioga	609, 647, 652, 745, 776, 817
Tompkins	614, 616, 634, 766, 786, 813
Warren	619, 649, 652, 761, 782, 815
Washington	621, 665, 688, 723, 780, 805

CHANNEL REQUIREMENTS BY APPLICANT / COUNTY
(WITHIN 100 KM. CANADIAN TREATY IMPACT ZONE)

ALL ELIGIBLES 830 : REGION-WIDE LOW POWER MOBILE ONLY. 868.9875

ALL EMS ELIGIBLES
 822 : REGION-WIDE LOW POWER MOBILE ONLY. 868.8875

ALL FIRE ELIGIBLES
 820 : REGION-WIDE LOW POWER MOBILE ONLY. 868.8625

ALL POLICE ELIGIBLES:
 824 : REGION-WIDE LOW POWER MOBILE ONLY. 868.9125

NEW YORK STATE DEPARTMENT OF ENVIRONMENTAL CONSERVATION
 794 : REQUESTED FOR REGION-WIDE.

NEW YORK STATE OFFICE OF EMERGENCY MANAGEMENT
 792 : REQUESTED FOR REGION-WIDE.

NEW YORK STATE POLICE
 602, 640, 678, 716, X754 : REQUESTED FOR STATE-WIDE.
 826, 827, 828, 829 : REQUESTED FOR STATE-WIDE AND
 LOW POWER MOBILE ONLY.

Cayuga	6 channels - 612, 656, 662, 731, 768, 815
Clinton	6 channels
Essex	6 channels - 609, 611, 629, 764, 785, 817
Franklin	6 channels
Hamilton	6 channels - 670, 692, 721, 747, 771, 777 (Base stations are located outside Impact Zone, but mobiles may be within.)

- REGIONAL PLAN -

THE NEW YORK-ALBANY RADIO PLANNING COMMITTEE

(FCC-REGION 30)

CHANNEL REQUIREMENTS BY APPLICANT / COUNTY

(WITHIN 100 KM. CANADIAN TREATY IMPACT ZONE)

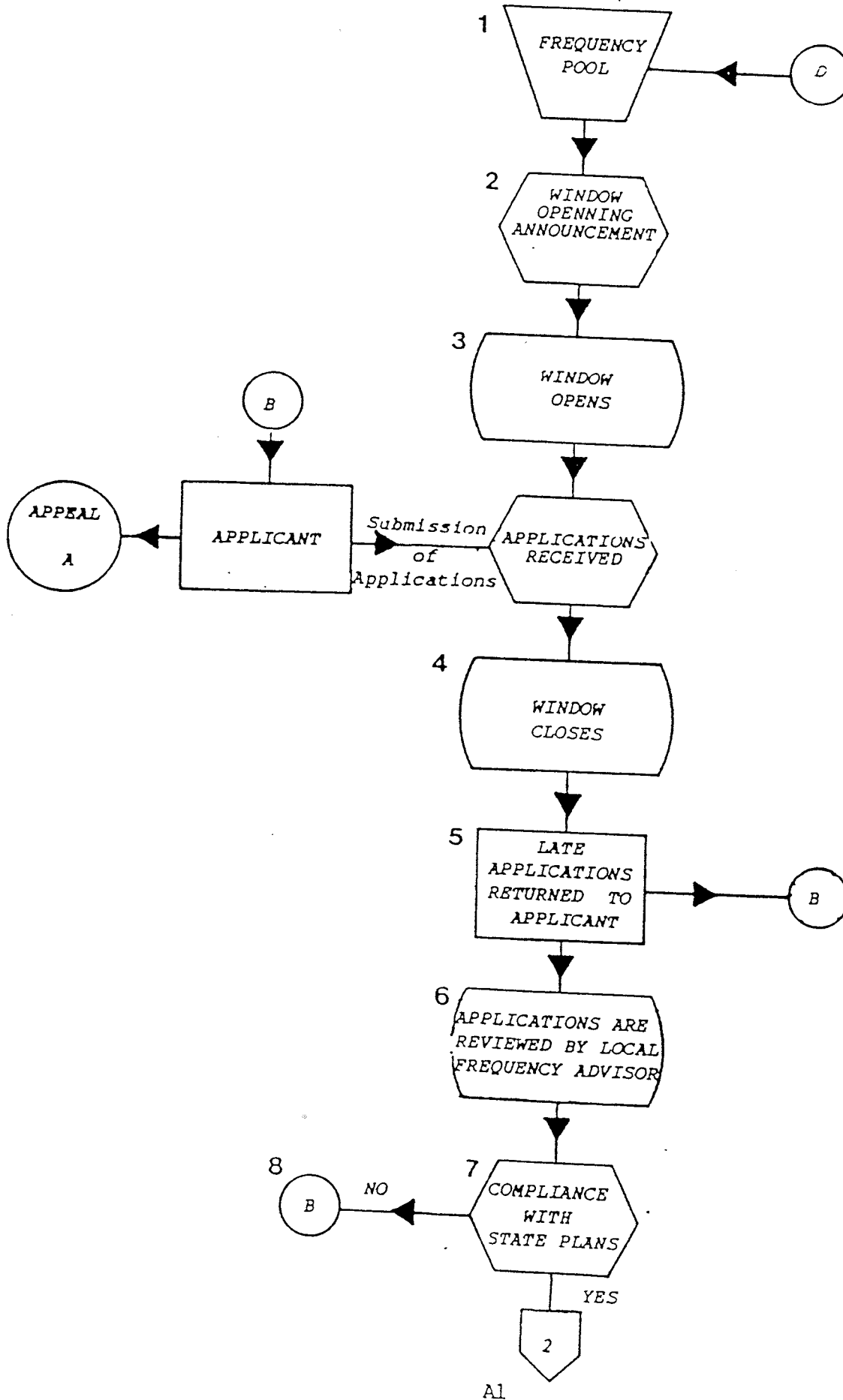
<u>APPLICANT / COUNTY</u>	<u>CHANNELS ASSIGNED</u>
Herkimer	6 channels - 613, 633, 653, 697, 730, 745
Jefferson	7 channels
Lewis	6 channels
Madison	6 channels - 630, 658, 682, 778, 804, 814 (Base stations are located outside Impact Zone, but mobiles may be within.)
Oneida	11 channels - 608, 617, 661, 663, 665, 684, 742, 763, 769, 798, 816 (Base stations are located outside Impact Zone, but mobiles may be within.)
Onondaga	20 channels - 606, 610, 627, 632, 667, 669, 671, 686, 689, 691, 736, 740, 744, 746, 760, 773, 775, 780, 782, 818
Oswego	7 channels
St. Lawrence	6 channels

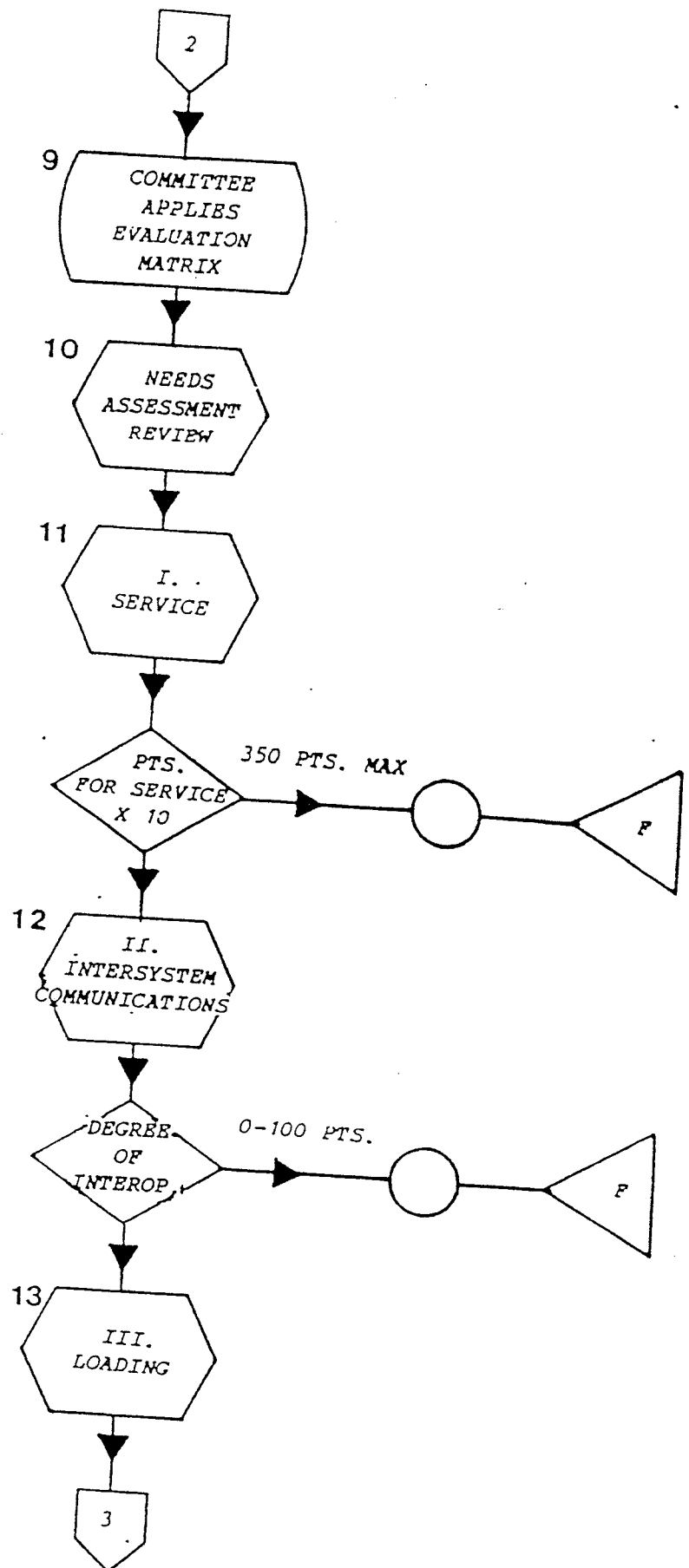
NOTE: Some Counties are intersected by the 100 KM Canadian Treaty Impact Zone boundary such that either:

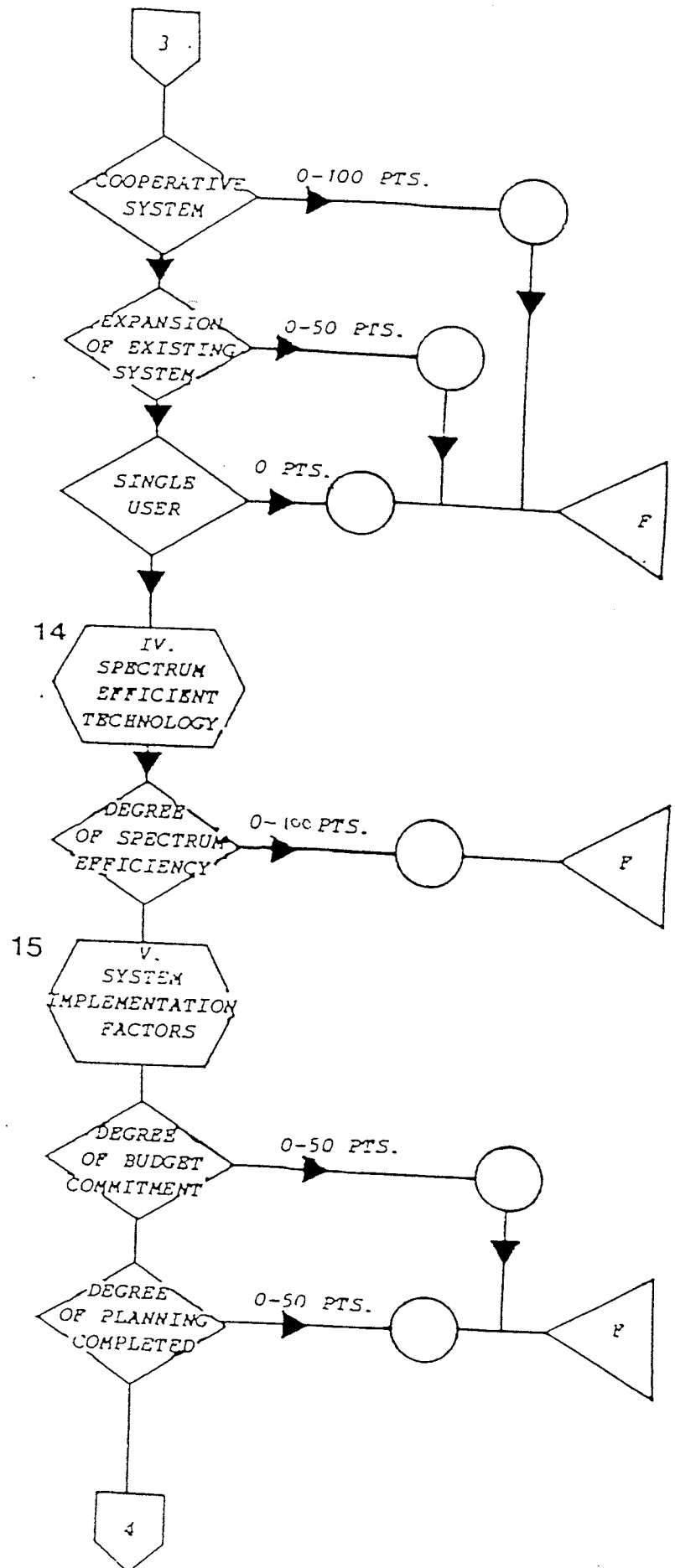
1. all base stations are within the Zone, or
2. some of the base stations are within the Zone, or
3. none of the base stations are within the Zone, but mobiles may operate within the Zone.

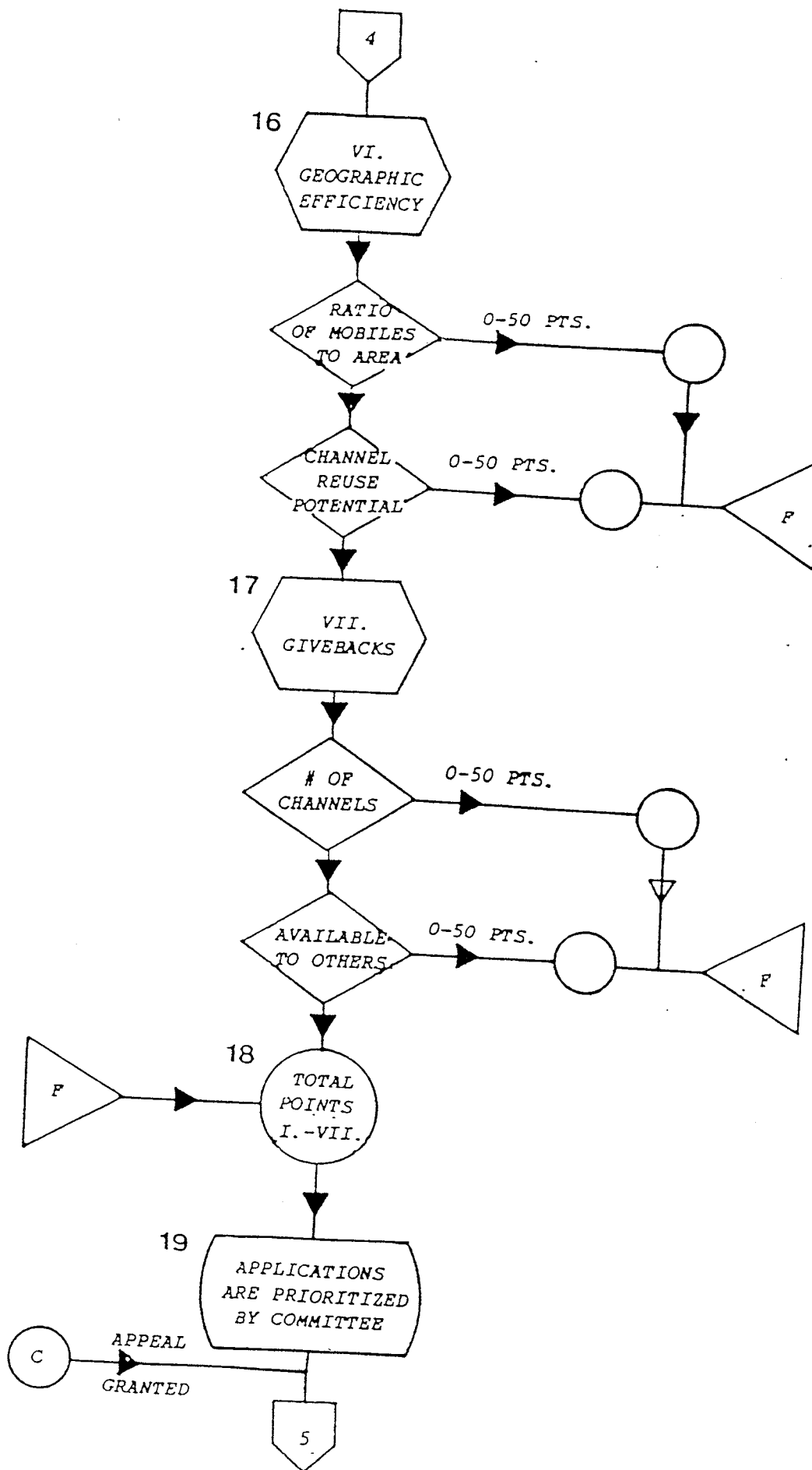
Specific channel assignments within the 100 KM Canadian Treaty Impact Zone are subject to final determination by FCC under the terms of the Treaty.

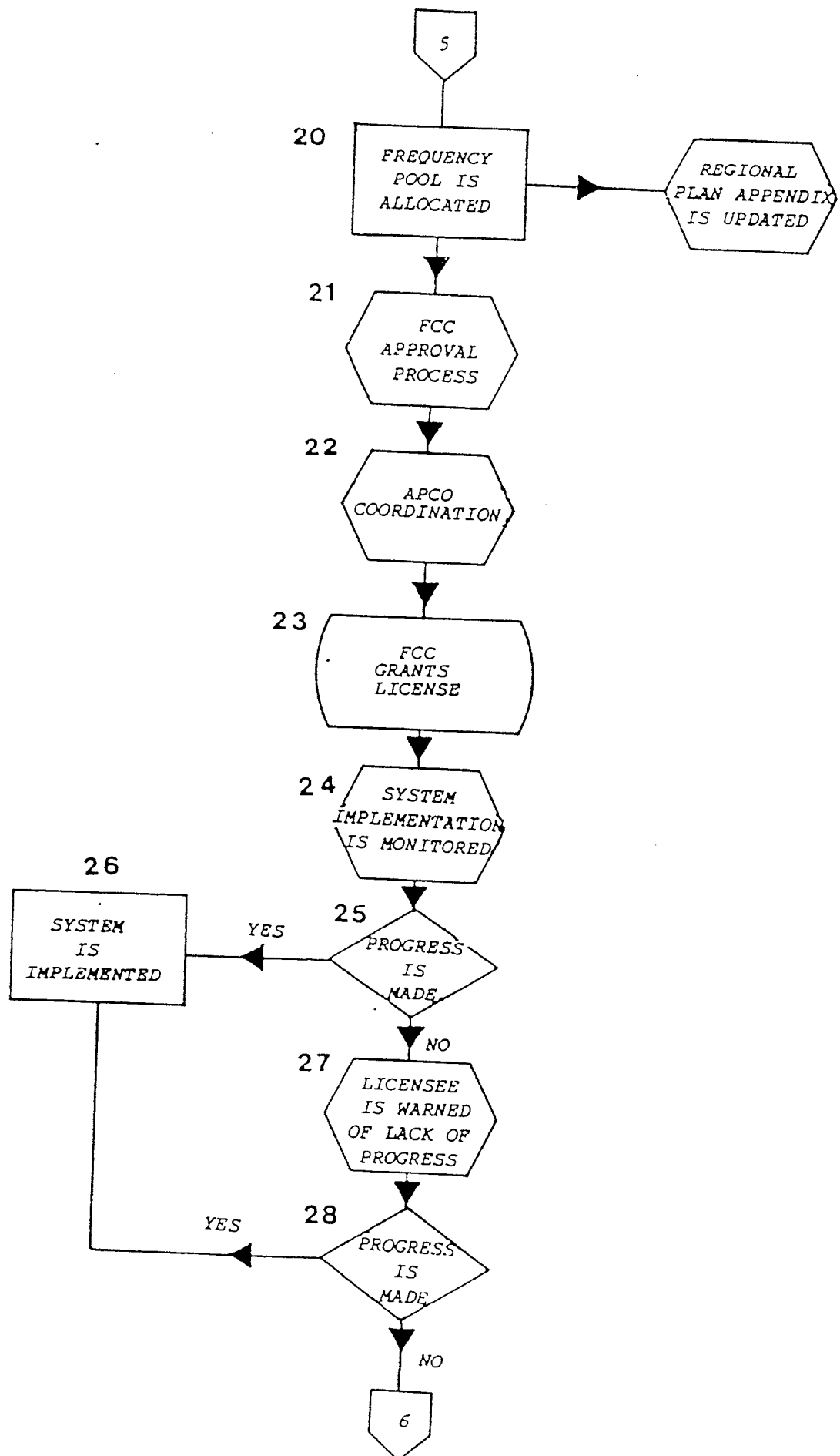
EVALUATION MATRIX

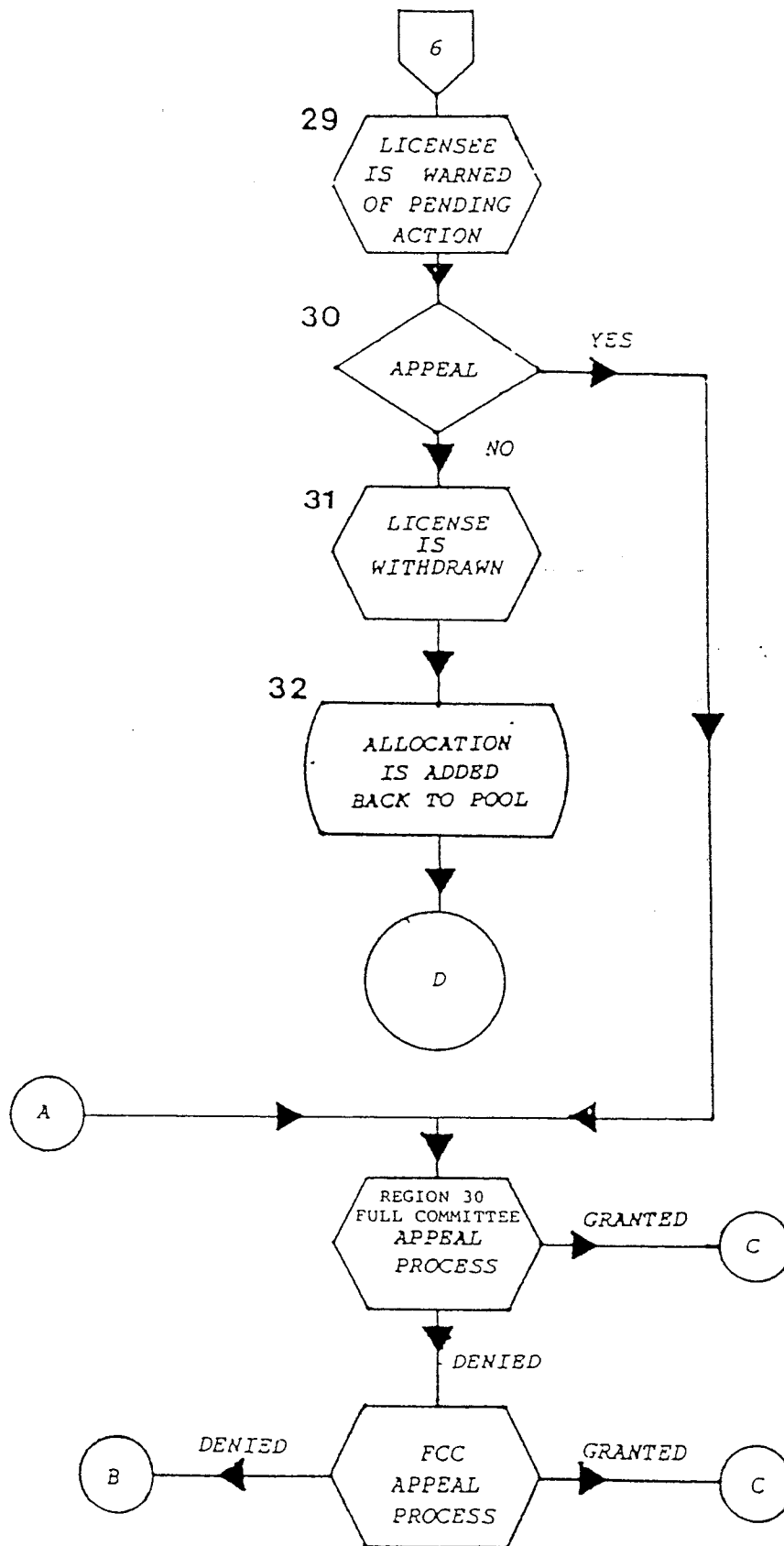












4. Application Date: ____ / ____ / ____ 5. Page: ____ of ____
8. Agency City: _____

Agency	Y	N	Agency	Y	N

26. Concurrences:

27. Applicant Remarks:

28. Coordinator Remarks:

29. Station Street or Geographical Location	30. City	31. County / 32. State
A		
B		
C		
D		
E		
F		

[illegible][illegible]

SUPPLEMENTAL INFORMATION TO BE ATTACHED TO THIS FORM. WHERE APPLICABLE, THIS INFORMATION SHOULD BE COMPLETE AND AS MUCH DETAIL AS POSSIBLE IN ORDER TO ASSIST THE COMMITTEE IN DISTRIBUTING CHANNELS.

1. A detailed engineering report, including a predicted coverage survey using actual requested technical parameters. This report must indicate the applicant's routine area of transmit, the radio area of coverage predicted, and steps that have been taken to restrict coverage to that actually required. It is expected that detailed topographic maps will be provided showing these areas.
2. Explain how your agency's need for interoperation with the other public safety agencies in lower bands will be accomplished. This pertains to interoperation of entities during public safety emergencies as requested by the FCC in Docket 87-112.
3. Explain in detail how in a regional or national emergency your agency will interface into Emergency Management radio systems such as RACES, FEMA, and to the State Emergency Operations Center. How will a notice of such emergency be received by your agency?
4. Explain the steps that will be taken to implement operation on the five national common channels. These channels, used for interagency communications during emergencies and disasters, are required by all public safety licensees.
5. Explain in detail for the need for use by your agency of a radio system at 800 MHz. Explain deficiencies with existing systems and how they will be rectified by a new radio system. Explain why your needs cannot be served by SMR's, cellular mobile telephone, or other existing networks.
6. Supply detailed information showing a budget commitment for the installation of a new radio system within 3 years of a license grant. Since radio channels are in limited supply, these new frequencies cannot be allocated on speculation. A reasonable expectation of implementation is required.
7. Supply details of all existing radio channels licensed to your agency. Indicate which channels will be relinquished if this request is granted. Fully justify the retention of any frequencies licensed. Retained frequencies, not fully justified, will be evaluated against an applicant in the matrix.

DO NOT MAKE ENTRIES IN THE TOP LINE

1. Leave blank
2. Leave blank
3. Code name of service, i.e., Public Safety, Special Emergency
4. Enter date application is prepared.
5. Enter 1 of 1, 1 of 2, 2 of 3, as appropriate.
6. Enter applicant agency which will use frequency. See (25).
7. Enter street address of (6) above.
8. Enter name of City in which applicant agency is located.
9. Enter name of County in which applicant agency is located.
10. Enter two-letter abbreviation for applicant's state.
11. Enter mailing address Zip code of applicant agency.
12. Enter name of person to contact in (6) above, if necessary.
13. Enter name of person who prepared application.
14. Enter phone number including area code of (13) above.
15. Enter phone number including area code of (12) above.
16. Enter only the appropriate one of the (6) vertical spaces.
17. Is application for base(s) and mobile(s)?
18. Enter only the appropriate one of the (4) vertical spaces.
19. Enter call sign(s) of existing license(s), if any, which are effected by this application. See item (34) below.
20. Check appropriate space(s). NOTE: 421-430 MHz available only in Buffalo, Cleveland and Detroit areas.
21. Check appropriate space(s). If not applicable, leave blank.
22. Be sure this entry agrees with NEW in Item 34.
23. Enter numbers in appropriate space(s).
24. Enter complete address of facility having system control.
25. Number and paragraph of appropriate FCC Rules Section 90.
26. Do you have permission, from an existing user of this frequency(s) within your area, to also use the frequency(s) here being applied for? If yes, attach copy of such concurring agreement.
27. Enter any remarks that will furnish added information.
28. Leave blank.
29. Enter address OR other locators of transmitter facility(s).
30. Enter name of City where (29) above are located.
31. Enter name of County where (29) above are located.
32. Enter two-letter State abbreviation of (29) above.
33. Alphabetical identifiers MUST BE SAME AS IN (29) above.
34. These entries MUST agree with item 18:
Check only NEW if application is for a NEW frequency.
Check only MOD if application is for MODIFICATION of existing frequency.
Check only EXT if this is ONLY Informational reference to Existing frequency with no change.
35. Enter transmitter frequency(s) in MHz.
36. Enter, in MHz, frequency of receiver associated with (35).
37. Example, enter: FB=Fixed Base, MO=Mobile, FX1= Control, etc. See FCC Rules. Use only one line per class (do not Mix).
38. Enter number of units. See (37) above.
39. Type of transmitter emission. i.e., 20F3, BA3, etc. See Rules.
40. Enter transmitter power in watts. If mobile, list highest power. All others will be assumed same.
41. Enter gain in DB. If no gain, enter 0.
42. EFFECTIVE RADIATED POWER in watts.
43. If non-directional antenna, enter 360. If directional, enter compass point direction of main power lobe, to the nearest degree.
44. Enter angle in degrees antenna is tilted from vertical plane. If none enter 0.
45. Where required (470-512 MHz and above 800 MHz) enter antenna height ABOVE AVERAGE TERRAIN (AAT).
46. Enter ground level in feet above mean sea level (AMSL).
47. Enter distance in feet from ground to tip of antenna.
48. Enter in Degrees, Minutes, and nearest Seconds: North.
49. Enter in Degrees, Minutes, and nearest Seconds: West.
50. If used, enter transmitter squelch tone code in Hz. APCO STRONGLY recommends use of coded squelch.
51. Enter as in (50) above for receiver.

SUBMIT THIS FORM AND ALL REQUIRED ATTACHMENTS TO:

Mr. Paul F. Schonewolf
Chairman, Region 30 Public Safety
Planning Committee
1430 Balltown Road
Schenectady, New York 12309

APPLICANT'S CERTIFICATION

1. The information supplied on this form and all attachments is a true and correct representation of the needs of this eligible licensee in the Public Safety or Special Emergency Radio Service.
2. The five common interagency channels will be implemented to permit exchange of priority information during emergencies or disasters. This agency will participate with other agencies in the Region to fully implement an interagency network as described in the Plan and required by the FCC.
3. This agency has a firm intention to implement a new 800 MHz system within 3 years and to return, for use by other public safety eligibles, existing unneeded channels. Should implementation not begin within two years, or channel loading projected not be attained within 3 years, channels will be returned for reallocation to others.

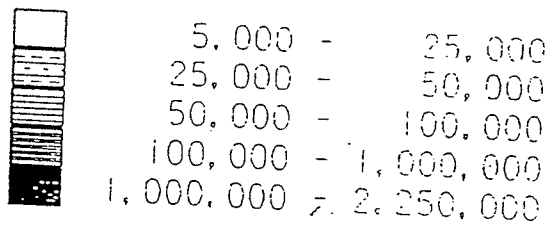
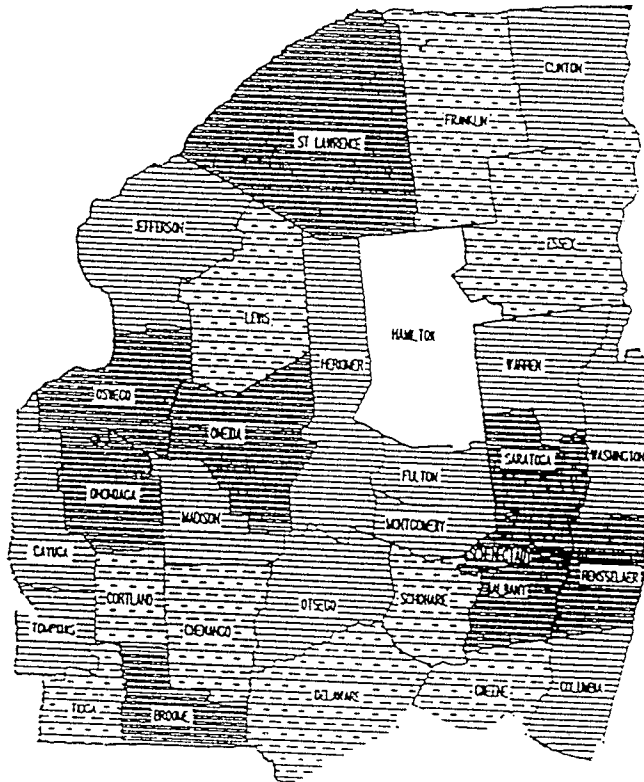
Eligible Licensee Name

Signature - Official Representative

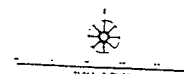
Date

Typed Signature's Name

Population
New York State by County
1980



BUREAU OF THE CENSUS.
1980 STF34, TABLE 3.
COMPUTER GRAPHIC PRODUCED BY THE
NEW YORK STATE LEGISLATIVE TASK FORCE ON
DEMOGRAPHIC RESEARCH AND REAPPORTIONMENT
250 BROADWAY - 20TH FLOOR
NEW YORK, NEW YORK 10007



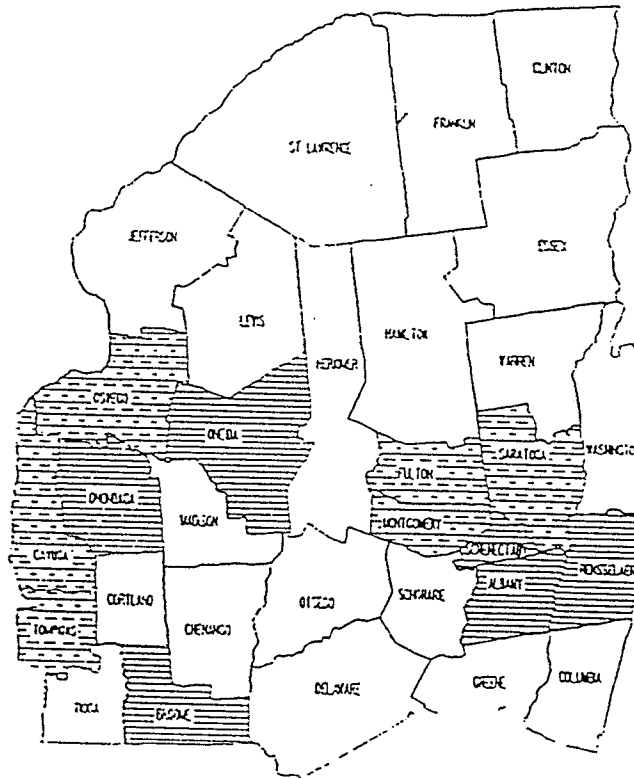
REGION 30

COUNTY	POPULATION x 1,000	
	1980	2010 (EST)
ALBANY	286	295
BROOME	214	207
CAYUGA	80	83
CHENANGO	49	57
CLINTON	81	99
COLUMBIA	59	79
CORTLAND	49	55
DELAWARE	47	48
ESSEX	36	41
FRANKLIN	45	45
FULTON	55	65
GREENE	41	43
HAMILTON	5	6
HERKIMER	67	73
JEFFERSON	88	154
LEWIS	25	35
MADISON	65	79
MONTGOMERY	53	56
ONEIDA	253	268
ONONDAGA	464	483
OSWEGO	114	153
OTSEGO	59	66
RENSSELAER	152	163
ST. LAWRENCE	114	131
SARATOGA	154	197
SCHENECTADY	150	154
SCHOHARIE	30	35
TIOGA	50	51
TOMPKINS	87	105
WARREN	55	64
WASHINGTON	55	66

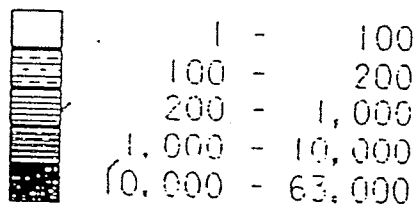
SOURCE: New York State Department of Commerce,
State Data Center.

REGION 30

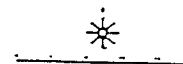
Population Density
New York State by County
1980



Population
per square mile



BUREAU OF THE CENSUS,
1980 STAFF, TABLE 3,
COMPUTER GRAPHIC PROCESSED BY THE
NEW YORK STATE DEPARTMENT OF
DEMOGRAPHIC RESEARCH AND RESEARCH CENTER
220 BROADWAY - 20TH FLOOR
NEW YORK, NEW YORK 10007



REGION 30

<u>COUNTY</u>	<u>POPULATION</u> <u>1980</u>	<u>LAND AREA</u> <u>SQUARE MILES</u>	<u>POPULATION</u> <u>PER SQ. MILE</u>
ALBANY	285,909	524	545.6
BROOME	213,648	712	300.1
CAYUGA	79,894	695	115.0
CHENANGO	49,344	897	55.0
CLINTON	80,750	1,043	77.4
COLUMBIA	59,487	638	93.2
CORTLAND	48,820	500	97.6
DELAWARE	46,824	1,440	32.5
ESSEX	36,176	1,807	20.0
FRANKLIN	44,929	1,642	27.4
FULTON	55,153	497	111.0
GREENE	40,861	648	63.1
HAMILTON	5,034	1,721	2.9
HERKIMER	66,714	1,417	47.1
JEFFERSON	88,151	1,273	69.2
LEWIS	25,035	1,283	19.5
MADISON	65,150	656	99.3
MONTGOMERY	53,439	404	132.3
ONEIDA	253,466	1,219	207.9
ONONDAGA	463,920	785	591.0
OSWEGO	113,901	954	119.4
OTSEGO	59,075	1,004	58.8
RENSSELAER	151,966	655	232.0
ST. LAWRENCE	114,347	2,728	41.9
SARATOGA	153,759	810	189.8
SCHENECTADY	149,946	206	727.9
SCHOHARIE	29,710	624	47.6
TIOGA	49,812	519	96.0
TOMPKINS	87,085	477	182.6
WARREN	54,854	882	62.2
WASHINGTON	54,795	836	65.5

SOURCE: 1980 Census of the Population, United States Bureau of the Census; material compiled by New York State Department of Commerce, State Data Center.

NEW YORK - ALBANY REGION 30 PLANNING COMMITTEE

10/16/

SERVICE POINT RATING	POINT	MAX	AVG	R
All Local Government (AVG)	132	24	13	
Transit Systems	161	30	16	
Utility Operations	177	25	18	1
School Boards	67	15	7	
Administration	139	21	14	
Maintenance	114	25	11	
Security Patrols	115	25	12	
Emergency Management	232	35	23	
Other Functions	53	15	5	
Primary Police	350	35	35	3
Auxiliary Police	148	30	15	
Fire	348	35	35	3
Highway	265	35	27	1
Forestry (AVG)	241	35	24	1
Forest Fire	269	35	27	1
Conservation	213	35	21	1
All Medical Services (AVG)	155	25	16	7
Hospitals	246	35	25	10
Invalid Coach	124	25	12	5
Physicians	96	16	10	5
Rescue - ALS & BLS	318	35	32	10
Physically Handicapped	106	30	11	5
Veterinarians	72	25	7	0
Disaster Relief Org.	117	24	12	0
All School Buses (AVG)	106	23	11	3
Private - Under Contract	73	15	7	0
Municipal Operated	105	20	11	5
Part of OEM EVAC	141	35	14	5
Beach Patrols	75	19	8	0
Isolated Areas	96	33	10	0
Comm Standby Facilities	144	35	14	0
Repair of Comm Facilities	175	35	18	5

Rate each category from 0 - 35 points

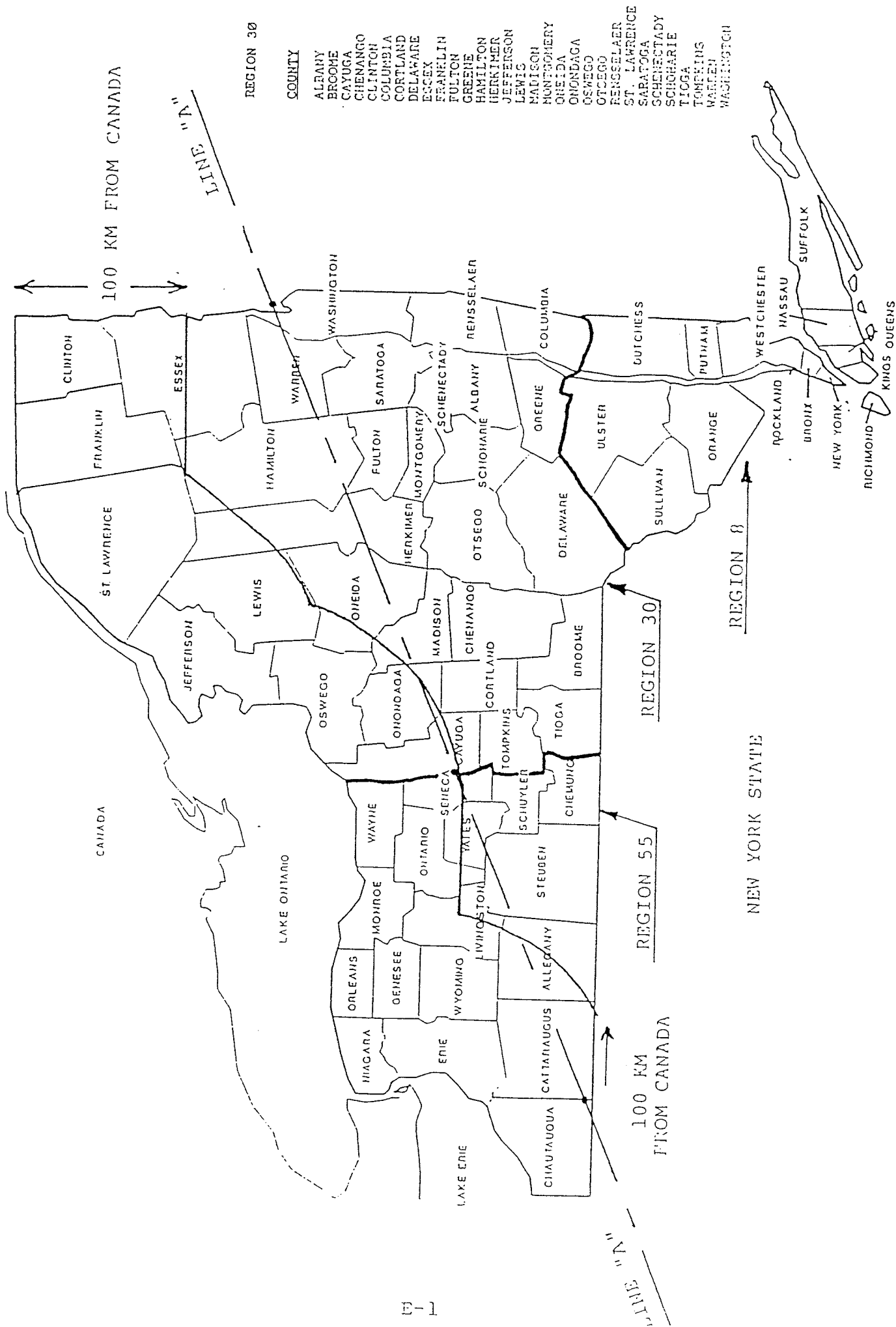
(Note: Point values may be the same for different services, i.e.:
police and fire may both be rated at 35.)

<u>CATEGORY</u>	<u>RATING</u>	<u>CATEGORY</u>	<u>RATING</u>
LOCAL GOVERNMENT		RESCUE ORGANIZATIONS	
Administration	_____	Primary BLS & ALS	_____
Emergency Management	_____	PHYSICALLY HANDICAPPED	_____
Maintenance	_____	VETERINARIANS	_____
School Boards	_____	DISASTER RELIEF ORGANIZATIONS	_____
Security Patrols	_____	SCHOOL BUSES	
Transit systems/ facilities	_____	Private (under contract)	_____
Utility Operations	_____	Municipal operated	_____
Other Functions	_____	Part of OEM Evac. Plan	_____
POLICE		BEACH PATROLS	_____
Primary Police	_____	ISOLATED AREAS	_____
Aux. Police	_____	COMMUNICATIONS STANDBY FACILITIES (Common Carrier)	_____
FIRE	_____	REPAIR SERVICE OF PUBLIC COMMUNICATION FACILITIES (Common Carrier)	_____
HIGHWAY	_____		
FORESTRY			
Forest Fire	_____		
Conservation	_____		
MEDICAL SERVICES		Submitted by _____	
Hospitals	_____	Return for data processing to:	
Invalid Coach	_____	Robert F. Schlieman	
Physicians	_____	New York State Police	
		Building 22, State Campus	
		Albany, New York 12226-0001	

REGION 30

COUNTY

ALBANY
BROOKE
CAYUGA
CHENANGO
CLINTON
COLUMBIA
CORTLAND
DELAWARE
ESSEX
FRANKLIN
FULFORD
GREENE
HAMILTON
HERKIMER
JEFFERSON
LEWIS
MADISON
MONTGOMERY
ONEIDA
ONONDAGA
OSWEGO
PUTNAM
SCHENECTADY
SCHOENEBROOK
TIOGA
WARREN
WASHINGTON



FREQUENCY ASSIGNMENT METHODOLOGY

Introduction:

The frequency assignment methodology used is a two-stage process. The first stage is to assign channels, to the degree possible to all eligibles who have applied for them, in accordance with the Committee's Plan. The second stage is to create frequency pools to be used by future applicants for channels which satisfy the coverage and interference parameters to be defined later in this Section.

Desired Coverage:

The desired coverage of a system is considered to be, as a maximum, three (3) miles outside of the boundary of the applicant's jurisdiction. The maximum "designed mean signal strength" at this contour shall not exceed +40dBu (+40dB above one microvolt per meter). In order to allow for practical system design, the three mile pad may be altered on a case-by-case basis, and the minimum coverage radius in all cases shall be five (5) miles.

Interference - Co-Channel:

Co-channel assignments will be made when it is determined that the two or more systems will create a signal strength of +5dBu or less anywhere within their co-channel partner's boundary.

Interference - Adjacent Channel:

Adjacent channel assignments will be made when it is determined that the two or more systems will create a signal strength of +25dBu or less anywhere within their adjacent channel partner's boundary.

FREQUENCY ASSIGNMENT METHODOLOGY (CONT'D.)

Miscellaneous Considerations:

For practical engineering reasons in the area of transmitter combining, frequency assignments for the same site, for the same applicant, will be spaced 0.25 MHz apart, to the degree possible.

Computer Model:

The computer propagation model used to calculate the "designer mean signal strength" is Okumura/Hata. This model has been shown to provide the most accurate results in this frequency band.

Computer Aided Assignments:

A computer program is used to do the many calculations and iterations required to solve an otherwise impossible task of efficient channel usage.

Inputs to the program include the applicant's identification, location, coverage requirements and number of channels.

The computer will take all of the inputs and find, if possible, a solution of specific channel assignments which meet the coverage and interference parameters stated above using the minimum number of channels.

Following this stage, future assignments are considered by creating compatible pools of channels based on growth projections of population.

REGION 30

CHANNEL REQUIREMENTS BY COUNTY POPULATION

<u>COUNTY</u>	<u>POPULATION x 1,000</u>		<u>TRUNKED CHANNELS</u>	<u>CONVENTIONAL CHANNELS</u>
	<u>1980</u>	<u>2010 (EST)</u>		
ALBANY	286	295	10	2
BROOME	214	207	8	1
CAYUGA	80	83	5	1
CHENANGO	49	57	5	1
CLINTON	81	99	5	1
COLUMBIA	59	79	5	1
CORTLAND	49	55	5	1
DELAWARE	47	48	5	1
ESSEX	36	41	5	1
FRANKLIN	45	45	5	1
FULTON	55	65	5	1
GREENE	41	43	5	1
HAMILTON	5	6	5	1
HERKIMER	67	73	5	1
JEFFERSON	88	154	6	1
LEWIS	25	35	5	1
MADISON	65	79	5	1
MONTGOMERY	53	56	5	1
ONEIDA	253	268	10	1
ONONDAGA	464	483	18	2
OSWEGO	114	153	6	1
OTSEGO	59	66	5	1
RENSSELAER	152	163	6	1
ST. LAWRENCE	114	131	5	1
SARATOGA	154	197	7	1
SCHENECTADY	150	154	6	1
SCHOHARIE	30	35	5	1
TIOGA	50	51	5	1
TOMPKINS	87	105	5	1
WARREN	55	64	5	1
WASHINGTON	55	66	5	1

MINIMUM REQUIREMENT = 1 CONVENTIONAL CHANNEL
5 TRUNKING CHANNELS (MINIMUM PUBLIC SAFETY
TRUNKING SYSTEM)

ONE (1) RADIO CHANNEL PER 25,000 POPULATION BASED UPON THE
ESTIMATED POPULATION FOR THE YEAR 2010. (THIS PRODUCES ONLY A
MINOR VARIATION FROM THAT BASED UPON THE YEAR 1980.)

NEW YORK - ALBANY
(FCC - REGION 30)
800 MHZ REGIONAL PLANNING COMMITTEE
MEMBERSHIP LISTING

William J. Arsenault
General Electric Co. - Mobile Comm.
5 Corporate Plaza, Washington Ave.
Albany, NY 12203

Chip Beaudet
Mountain Lakes EMS Program
c/o SEMO Office, Fox Farm Rd.
Queensbury, NY 12804

Wayne Calder
Town of Rotterdam Police Dept.
101 Princetown Rd.
Rotterdam, NY 12306

James L. Cook
Police Chief
City of Johnstown Police Dept.
41 E. Main St.
Johnstown, NY 12095

Mark E. Fettingner
County of Fulton Sheriff Dept.
P.O. Box 20
Johnstown, NY 12095

William H. Frenz, P.E.
Chief, Encon Electronics Enginrg.
State of New York - DEC
50 Wolf Rd.
Albany, NY 12233

Vincent Generoso
City of Gloversville
Frontage Rd.
Gloversville, NY 12078

Edward W. Heberer
Fire Chief
City of Johnstown Fire Dept.
244 N. Perry St.
Johnstown, NY 12095

Robert Barnes
Fire Coordinator
County of Otsego
197 Main St.
Cooperstown, NY 13326

Rich Bohmer
Senior Account Manager
Mobile Data International
Three University Plaza
Hackensack, NJ 07601

Thomas A. Catino
Director of Communications
Town of Colonie Police Dept.
Memorial Town Hall
Newtonville, NY 12128

Greg Diana
Radio Communications Technician
State of New York - State Police
Bldg. 22 State Campus
Albany, NY 12226

Robert W. Fleissner
Motorola C & E, Inc.
85 Harristown Rd.
Glen Rock, NJ 07452

Michael Gancarz
Police Chief
City of Gloversville
Frontage Rd.
Gloversville, NY 12078

Robert C. Hamlin
District Sales Manager
Motorola C & E, Inc.
4 Corporate Plaza, Washington Ave.
Albany, NY 12203

Ben Hobe
County of Oneida Sheriff Dept.
Judd Rd.
Oriskany, NY 13501

NEW YORK - ALBANY
(FCC - REGION 30)
800 MHZ REGIONAL PLANNING COMMITTEE
MEMBERSHIP LISTING

Thomas Hubal
Sergeant
City of Rome Police Dept.
301 N. Main St.
Rome, NY 13440

Lyle Jones
County of Otsego
183 Main St.
Cooperstown, NY 13326

James A. King
Fire Coordinator
County of Clinton Fire / EMS
133 Margaret St.
Plattsburgh, NY 12901

Howard L. Lester
Electrical Engineer, Comm. Programs
General Electric Company - CR&DC
P.O. Box 8 Rm. KWC318
Schenectady, NY 12301

Irving E. McAndrew
MRD Program Director
State of New York - DCJS
Executive Prk Twr, Stuyvesant Plz
Albany, NY 12203

Tom McCabe
General Electric Co. - Mobile Comm.
5 Corporate Plaza, Washington Ave.
Albany, NY 12203

Harlin R. McEwen
Police Chief
City of Ithaca Police Dept.
120 E. Clinton St.
Ithaca, NY 14850

John L. Miller
Fire Coordinator
County of Tompkins Fire
72 Brown St.
Ithaca, NY 14850

Dana Jonas
State of New York - Dept. Health
Corning Tower Empire State Plaza
Albany, NY 12237

Edward Kehn
Fire Coordinator
County of Rensselaer, B.E.S.
221 North Greenbush Rd.
Troy, NY 12180

Jack Lamboy
Asst. Executive Director
New York State Assoc of Fire Chief
P.O. Box 445
Kinderhook, NY 12106

Herbert R. Martin
Fire Chief
City of Gloversville Fire Dept.
Frontage Rd.
Gloversville, NY 12078

James McCabe, Jr.
Area Sales Manager
Motorola C & E, Inc.
4 Corporate Plaza, Washington Ave.
Albany, NY 12203

John McClellan
Police Chief
City of Oneida Police Dept.
109 Main St.
Oneida, NY 13421

John J. McGovern
Police Chief
Town of Niskayuna Police Dept.
1335 Balltown Rd.
Schenectady, NY 12309

Jeremiah J. Minihane
Technical Services Coordinator
State of New York - State Police
Bldg. 22 State Campus
Albany, NY 12226

NEW YORK - ALBANY
(FCC - REGION 30)
800 MHZ REGIONAL PLANNING COMMITTEE
MEMBERSHIP LISTING

Charles Moehle, Chairman - SCLEMRD
Deputy Mayor
Village of Scotia
419 Riverside Ave.
Scotia, NY 12302

Richard Newman
State of New York - SEMO
Bldg. 22 State Campus
Albany, NY 12226

Gary E. Perkins
Frequency Advisor Northern NY
APCO Frequency Coordination
1530 Highland Ave.
Rochester, NY 14618

Russ Polizzotti
Area Mgr Nat Disaster Med Systems
Veterans Admin Medical Center
1220 Euclid Ave.
Syracuse, NY 13210

Jack G. Purdy
Deputy Chief of Police
Town of Glenville Police Dept.
18 Glenridge Rd.
Scotia, NY 12302

Paul Resten
Motorola C & E, Inc.
4 Corporate Plaza, Washington Ave.
Albany, NY 12303

Karl Schabinger
State of New York - DCS
Bldg. 2 State Campus
Albany, NY 12226

Paul F. Schonewolf, Chairman
Commissioner
Town of Niskayuna - Fire Dist. 1
1430 Balltown Rd.
Schenectady, NY 12309

Kevin Moore
Town of Colonie Police Dept.
Memorial Town Hall
Newtonville, NY 12128

Ron Olson
Sr. Account Executive
Motorola C & E, Inc.
4 Corporate Plaza, Washington Ave.
Albany, NY 12203

Frank Petrosi
Commissioner
City of Rome Fire Dept.
301 N. Main St.
Rome, NY 13440

Richard A. Pollak
Sr. Product Specialist
Motorola C & E, Inc.
45 Rumford Ave.
Waltham, MA 02154

Ralph E. Reichert
Deputy Sheriff
County of Schenectady Sheriff Dept
320 Veeder Ave.
Schenectady, NY 12307

Anthony Sambuca
Radio Communications Supervisor
State of New York - Dept. Transp
Bldg. 5 State Campus
Albany, NY 12226

Robert F. Schlieman
Radio Engineer
State of New York - State Police
Bldg. 22 State Campus
Albany, NY 12226

Jospeh W. Sleurs
Police Officer
Town of Bethlehem Police Dept.
447 Delaware Ave.
Delmar, NY 12054

NEW YORK - ALBANY
(FCC - REGION 30)
800 MHZ REGIONAL PLANNING COMMITTEE
MEMBERSHIP LISTING

Edward A. Smith
Federal Emergency Management Agency
20 Federal Plaza Rm. 1352
New York, NY 10278

Mark R. Sollohub
Deputy Police Chief
Town of Niskayuna Police Dept.
1335 Balltown Rd.
Schenectady, NY 12309

Geoff Spencer
Motorola C & E, Inc.
4 Corporate Plaza, Washington Ave.
Albany, NY 12303

Steve Stanziano
General Electric Co. - Mobile Comm.
5 Corporate Plaza, Washington Ave.
Albany, NY 12203

Vincent R. Stile, APCO / Region 8
Director of Communications
County of Suffolk Police Dept.
Yaphank Ave.
Yaphank, NY 11980

Marvin J. Stock
Sergeant
City of Johnstown Police Dept.
41 E. Main St.
Johnstown, NY 12095

Lou Suriano
Deputy Police Chief
Town of Rotterdam Police Dept.
101 Princetown Rd.
Rotterdam, NY 12306

Emil T. Vogel
Manager, Spectrum Resources
Motorola C & E, Inc.
85 Harristown Rd.
Glen Rock, NJ 07452

Raymond Wemple
Director of Communications
County of Schenectady
531 Liberty St.
Schenectady, NY 12305

Carroll F. White, Region 8 Coord.
Director of Communications
Port Authority of NY & NJ
One Path Plaza 2nd Fl.
Jersey City, NJ 07306

Douglas V. Williams
General Electric Co. - Mobile Comm.
5 Corporate Plaza, Washington Ave.
Albany, NY 12203

Robert N. Winchell
County of Fulton Sheriff Dept.
P.O. Box 20
Johnstown, NY 12095

Richard J. Wooding
Systems Engineer
General Electric Co. - Mobile Comm.
5 Corporate Plaza, Washington Ave.
Albany, NY 12203

Thomas J. Wutz
State of New York - OFC Fire Prever
162 Washington Ave.
Albany, NY 12231

--- END OF LIST ---

NEW YORK - ALBANY
(FCC - REGION 30)
800 MHZ REGIONAL PLANNING COMMITTEE
MEMBERSHIP ATTENDANCE

	2/1/89	3/3/89	4/19/89	5/31/89	10/18/89
William J. Arsenault	X		X		
Robert Barnes	X		X	X	
Chip Beaudet	X	X	X		
Rich Bohmer	X				
Wayne Calder	X				
Thomas A. Catino	X	X	X	X	X
James L. Cook	X	X			X
David G. DeBonzo					X
Greg Diana			X		
Mark E. Fettingner	X				
Robert W. Fleissner			X		
William H. Frenz	X	X	X	X	X
Michael Gancarz	X				
Vincent Generoso	X				
Robert C. Hamlin	X	X			X
Edward W. Heberer	X	X		X	X
Ben Hobe		X			
Thomas Hubal	X	X	X		
Dana Jonas		X			
Lyle Jones	X				
Edward Kehn		X	X	X	X
James A. King	X	X		X	
Jack Lamboy	X	X		X	X
Howard L. Lester	X	X			

NEW YORK - ALBANY
(FCC - REGION 30)
800 MHZ REGIONAL PLANNING COMMITTEE
MEMBERSHIP ATTENDANCE

	2/1/89	3/3/89	4/19/89	5/31/89	10/18/89
Herbert R. Martin	X	X			
Irving E. McAndrew	X		X	X	X
James McCabe, Jr.	X	X			
Tom McCabe			X		
John McClellan	X	X			
Harlin R. McEwen	X				
John J. McGovern	X	X			
John L. Miller	X	X		X	
Jeremiah J. Minihane	X		X	X	X
Charles Moehle		X			
Kevin Moore	X				
Richard Newman	X	X			X
Ron Olson		X		X	
Gary E. Perkins					X
Frank Petrosi	X				
Russ Polizzotti	X				
Richard A. Pollak			X		
Jack Purdy		X			
Ralph E. Reichert	X				
Paul Resten		X	X		
Anthony Sambuca			X		
Karl Schabinger	X				
Robert F. Schlieman	X	X	X	X	X
Paul F. Schonewolf	X	X	X	X	X

3/30/90

NEW YORK - ALBANY
(FCC - REGION 30)
800 MHZ REGIONAL PLANNING COMMITTEE
MEMBERSHIP ATTENDANCE

	2/1/89	3/3/89	4/19/89	5/31/89	10/18/89
Joseph W. Sleurs	X	X		X	
Edward A. Smith	X				
Mark R. Sollohub	X	X	X		
Geoff Spencer				X	
Steve Stanziano		X			
Vincent R. Stile	X	X	X		
Marvin J. Stock	X	X			
Lou Suriano	X				
Emil T. Vogel	X		X	X	
Raymond Wemple	X	X	X	X	X
Carroll F. White	X				
Douglas V. Williams	X	X			
Robert N. Winchell	X				
Richard J. Wooding			X	X	
Thomas J. Wutz			X		

- REGIONAL PLAN -

THE NEW YORK-ALBANY RADIO PLANNING COMMITTEE

(FCC-REGION 30)

ADMINISTRATIVE SUBCOMMITTEE MEMBERSHIP

LIEUTENANT THOMAS A. CATINO, CHAIRMAN
Director of Communications
Town of Colonie Police Department
Newtonville, New York 12128
(518) 783-2811

ROBERT BARNES
Fire Coordinator
County of Otsego
197 Main Street
Cooperstown, New York 13326

ROBERT C. HAMLIN
Motorola C & E, Inc.
4 Corporate Plaza, Suite 414
Washington Avenue Extension
Albany, New York 12203
(518) 869-2211

JAMES KING
Fire Coordinator
County of Clinton
133 Market Street
Plattsburgh, New York 12901
(518) 565-4791

CHIEF JOHN McCLELLAN
City of Oneida Police Department
109 North Main Street
Oneida, New York 13421
(315) 363-9111

DEPUTY CHIEF MARK SOLLOHUB
Town of Niskayuna Police Department
1335 Balltown Road
Schenectady, New York 12309
(518) 374-3159

RAYMOND W. WEMPLE
Director of Communications
County of Schenectady
531 Liberty Street
Schenectady, New York 12305

- REGIONAL PLAN -

THE NEW YORK-ALBANY RADIO PLANNING COMMITTEE

(FCC-REGION 30)

INTEROPERABILITY SUBCOMMITTEE MEMBERSHIP

CHIP BEAUDET, CHAIRMAN
Program Director,
Mountain Lakes EMS Program
c/o State Emergency Management Office
Queensbury, New York 12804
(518) 793-8200

DANA JONAS
Communications Officer,
New York State Department of Health
Emergency Medical Services Program
74 State Street - 4th Floor
Albany, New York 12207-2512
(518) 474-2219

CHIEF HARLIN R. McEWEN
City of Ithaca Police Department
120 Clinton Street
Ithaca, New York 14850
(607) 272-3245

JOHN MILLER
Fire Coordinator,
County of Tompkins
72 Brown Road
Ithaca, New York 14850
(607) 257-3888

T/SERGEANT JEREMIAH J. MINIHANE
Acting Asst. Director of Communications
New York State Police
Bldg. 22 State Campus
Albany, New York 12226-0001
(518) 457-9466

- REGIONAL PLAN -

THE NEW YORK-ALBANY RADIO PLANNING COMMITTEE

(FCC-REGION 30)

TECHNICAL SUBCOMMITTEE MEMBERSHIP

ROBERT F. SCHLIEMAN, CHAIRMAN
Radio Engineer,
State of New York - State Police
Bldg. 22 State Campus
Albany, New York 12226-0001
(518) 457-9466

RICH BOHMER, Consultant
Coopers & Lybrand
136-300 Main St.
P.O. Box 5258
Princeton, New Jersey 08540
(609) 452-0540

GREG DIANA, Radio Comm. Techn.
State of New York - State Police
Bldg. 22 State Campus
Albany, New York 12226-0001
(518) 783-9258

ROBERT W. FLEISSNER, Electr. Engr.
Motorola C & E, Inc.
85 Harristown Road
Glen Rock, New Jersey 07452
(201) 447-4000

WILLIAM H. FRENZ, P.E.
New York State Department of
Environmental Conservation
50 Wolf Road
Albany, New York 12233
(518) 457-3914

HOWARD L. LESTER, Electrical Engr.
General Electric Company
Corporate Research & Devel. Center
P.O. Box 8 KWC-318
Schenectady, New York 12301
(518) 387-5346

IRVING E. McANDREW, MRD Program Dir
New York State Division of
Criminal Justice Service
Stuyvesant Plaza
Albany, New York 12203
(518) 457-8462

RON OLSON, Senior Account Executive
Motorola C & E, Inc.
4 Corporate Plaza, Suite 414
Washington Avenue Extension
Albany, New York 12203-5401
(518) 869-4490

GARY E. PERKINS, Frequency Advisor
APCO Frequency Coordination - N/NY
1530 Monroe Avenue
Rochester, New York 14618
(716) 428-5679

EMIL VOGEL, Mgr.-Spectrum Resources
Motorola C & E, Inc.
85 Harristown Road
Glen Rock, New Jersey 07452
(201) 447-4000

RICHARD J. WOODING, Electr. Engineer
General Electric Company Mobile
Communication
Corporate Plaza East, Suite 504
Washington Avenue Extension
Albany, New York 12203-5402
(518) 8969-2211

TOWN OF COLONIE
POLICE DEPARTMENT



MEMORIAL TOWN HALL
NEWTONVILLE, N.Y. 1212

November 22, 1988

Ralph Haller, Chief
Private Radio Bureau
Federal Communications Commission
2025 M Street, NW
Washington, DC 20554

Dear Mr. Haller:

Enclosed please find a draft copy of a Public Notice which contains the detailed information for the initial Regional Planning Committee of Region 30, Northeastern New York State.

It is my understanding that the publication of this notice by the FCC, along with my notification to the trade journals, will constitute appropriate public notification.

If you feel that my name should be included on your Public Notice as a contact person please feel free to do so.

Yours truly,

Thomas A. Catino

Thomas A. Catino
Covenor, Region 30

enclosure

TAC/mb

PUBLIC NOTICE

INITIAL MEETING OF THE NORTHEASTERN NEW YORK REGION 30
PUBLIC SAFETY REGIONAL PLANNING COMMITTEE

The initial meeting of the Northeastern New York Planning Region will be held on February 1, 1989 in the Town of Colonie Community Center, 1653 Central Avenue, Albany, NY. This meeting will start promptly at 10:00 a.m.

This meeting is in accordance with the FCC's Report and Order in Gen. Docket 87-112, adopted by the FCC on November 24, 1987 and released on December 18, 1987.

It is expected that for the purpose of this Regional Planning Committee the Northeastern New York area concerned will include the counties of: St. Lawrence, Franklin, Clinton, Jefferson, Lewis, Essex, Oswego, Cayuga, Onondaga, Madison, Oneida, Herkimer, Montgomery, Fulton, Hamilton, Warren, Saratoga, Washington, Schenectady, Rensselaer, Columbia, Green, Albany, Schoharie, Delaware, Otsego, Chenango, Broome, Cortland, Tompkins and Tioga.

In further accordance with the Report and Order the Associated Public-Safety Communications Officers, Inc. (APCO) has appointed Thomas A. Catino as the convenor of the meeting.

All interested parties are invited to attend this meeting. Since this is to be a technical planning committee, attendees should be prepared for such appropriate discussions.

The agenda for this initial meeting will consist of:

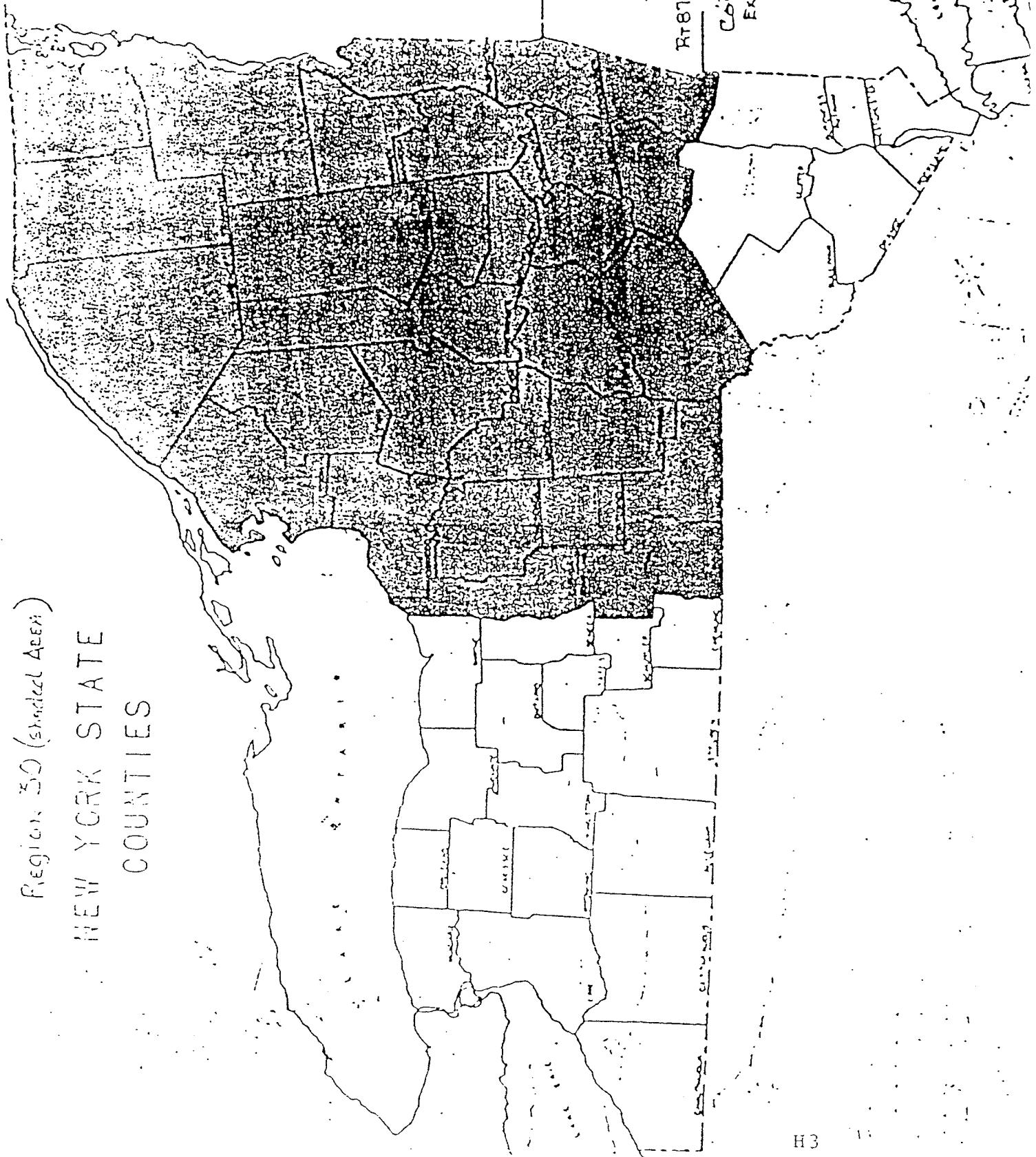
1. Introduction and Remarks
2. Review of the Report and Order
3. Election of the Regional Chairman
4. Adoption of Committee operating procedures.

Any questions regarding this meeting should be directed to:

Lt. Thomas A. Catino
Colonie Police Department
Memorial Town Hall
Newtonville, NY 12128

Phone: (518)783-2811

Region 30 (shaded Area)
NEW YORK STATE
COUNTIES



N

Northway - I-90

Colonie Comm. Center

Rt 87

Exit 25

Exit 26

Thruway

I-90

Exit 24

Rt 87 - To Exit 24 (Rt 87 West)
2 Traffic Lights from Exit
Comm. Center on Right
Exactly 1 mile from N'way

FEDERAL GOVERNMENT

Director
Federal Emergency Management Agency
500 C Street, SW
Washington, DC 20472

Regional Director
Federal Emergency Management Agency
26 Federal Plaza - Room 1349
New York, NY 10278

Director
National Communications System
Washington, DC 20305-2010

Assistant Secretary for
Communications and Information
National Telecommunications and
Information Administration
Department of Commerce
Washington, DC 20230

Director
National Security Agency
Fort George G. Meade, MD 20755-6000

Charles L. Hutchison
National Telecommunications &
Information Administration
14th & Constitution Ave., NW - Rm. 4706
Washington, DC 20230

Administrator
Drug Enforcement Administration
N.Y. Regional Office
555 West 57th Street
New York, NY 10019

Regional Commissioner
U.S. Customs Service
Department of the Treasury
6 World Trade Center
New York, NY 10048

Regional Director
Alcohol Tobacco & Firearms Bureau
Department of the Treasury
6 World Trade Center
New York, NY 10048

Engineer in Charge
Field Office
Federal Communications Commission
201 Varick Street
New York, NY 10014

Special Agent in Charge
Federal Bureau of Investigation
26 Federal Plaza
New York, NY 10278

Regional Administrator
U.S. Secret Service
Department of the Treasury
6 World Trade Center
New York, NY 10048

NEW YORK STATE GOVERNMENT

Director
State Emergency Management Office
Public Security Building
State Campus
Albany, NY 12226-5000

Secretariat
Disaster Preparedness Commission
Public Security Building
State Campus
Albany, NY 12226-5000

Director
State Civil Defense Commission
330 Old Niskayuna Road
Latham, NY 12110

New York State Clearinghouse
(State Single Point of Contact)
Division of the Budget
State Capitol
Albany, NY 12224

Harlin R. McEwen, Deputy Commissioner
N.Y. State Division of Criminal
Justice Services
Bureau for Municipal Police
Executive Park Tower, Stuyvesant Plaza
Albany, NY 12203-3764

Richard Barlette
Chief of Hazardous Material Bureau
New York State Office of Fire
Prevention and Control
Albany, NY 12231

OTHER AGENCIES

Larry Jordan, President
National Association of State
EMS Directors
Emergency Medical Services
1317 Winewood Blvd., Bldg. #8
Tallahassee, FL 32301

Dale Stauffer
National Communications System
Attn: NCS/EPO
8th & S. Courthouse Road
Arlington, VA 22204

Raymond C. Scheppach
Director Director
National Governors Association
Hall of the States
444 N. Capitol Street, NW
Washington, DC 20001

Garth G. Shibles
National Communications System
8th & S. Courthouse Road
Arlington, VA 22204

Under Secretary (State Single
Point of Contact)
Attn: Intergovernmental Review
Coordinator
Comprehensive Planning Division
Office of Policy & Management
80 Washington Street
Hartford, CT 06106-4459

Ken Curtin
Director Private Services
American Red Cross
150 Amsterdam Avenue
New York, NY 10023

Maynard J. Tinsman, Jr.
Representative
Federal Emergency Management Agency
Office of Information Resources Management
Attn: Agency Frequency Manager
Washington, DC 20472

PRINT MEDIA

Editor
Communications Week
600 Community Drive
Manhasset, NY 11030

Editor
FCC Week
1300 North 17th Street
Arlington, VA 22209

Editor
Mobile Radio Technology
P.O. Box 12901
Overland Park, KS 66212

Editor
RCR
1728 Downing Street
Denver, CO 80218

Editor
Network World
Box 9171
375 Cochituate Road
Framingham, MA 01701-9171

Editor
Telecommunications Reports
1036 National Press Building
Washington, DC 20045

Editor
Industrial Communications
7811 Montrose Road
Potomac, MD 20854

(Notice published 12/9/88 on page 6)

Editor
Communications Daily
1836 Jefferson Place, NW
Washington, DC 20036

Editor
Communications News
124 South 1st Street
Geneva, IL 60134

Industrial Communications™

mobile radio's newsletter since 1946

December 9, 1988
Washington, D.C.
Issue #47

INDUSTRIAL COMMUNICATIONS, December 9, 1988--Page 6

● The FCC received a regional plan for public safety radio communications for the use of the new 6 MHz public safety spectrum in the 800 MHz band for the North Central and Northeast Texas area. The plan will be effective for 42 Texas counties. The FCC will receive comments on the plan over the next 2 months. In addition, the Northeastern New York Region 30 Public Safety Regional Planning Committee will hold its first meeting on Feb. 1, 1989, in Albany, N.Y. The committee will concentrate on a report review, adoption of committee operating procedures, and the election of the regional chairman.

Excerpt of publication duplicated by permission of the publisher

Phillips Publishing, Inc.
301 / 340-2100
Carol Taylor

PROFESSIONAL GROUPS

Executive Director
AASHTO
444 N. Capitol St., NW
Suite 225
Washington, DC 20001

Executive Director
Land Mobile Communications Council
1150 - 17th St., NW
Suite 1000
Washington, DC 20036

Executive Director
American Hospital Association
840 N. Lake Shore Drive
Chicago, IL 60611

Executive Director
National Association of Business
and Educational Radio
1330 New Hampshire, NW #122
Washington, DC 20036

Robert Tall, Executive Director
APCO
930 Third Avenue
P.O. Box 669
New Smyrna Beach, FL 32070

Phil Gibson
American National Red Cross
18th & D Streets, NW
Washington, DC 20006

Executive Director
Forestry - Conservation Communications
Association
P.O. Box 3758
Charlottesville, VA 22903-0758

Bob Kellow
American College of Emergency
Physicians
P.O. Box 619911
Dallas, TX 75261-9911

Executive Director
Forest Industries Telecommunications
P.O. Box 5446
Eugene, OR 97405

Executive Director
International Municipal Signal
Association
P.O. Box 8249
Fort Worth, TX 76112

Executive Director
International Association of
Chiefs of Police
13 Firstfield Road
P.O. Box 6010
Gaithersburg, MD 20878

Executive Director
IBTTA
2120 L Street, NW #305
Washington, DC 20037

INDIVIDUALS

Baine, Robert S.	Otsego Co. Fire	197 Main Street Cooperstown, N.Y.
Barosa, Joseph G.	NYSP, Troop L	Troop L E. Farmingdale, N.Y.
Barry, Steve	SUNY Buffalo	Public Safety Buffalo, N.Y. 14260
Bergstrom, David L.	NYSP, Troop D	Oneida, N.Y.
Bertolini, Salvatore	NYSP Troop K Poughkeepsie	Rt. 44 & 82 Millbrook, N.Y.
Biviano, Larry	Cortland Co. Sheriffs	54 Greenbush Rd. Cortland, N.Y.
Brown, James E.	Elmira Fire Dept.	101-109 W. Second St. Elmira, N.Y.
Cretan, Ed	Chief of Rome Police	301 N. James St. Rome, N.Y.
Cunningham, Bob	Amherst PD	Amherst, N.Y.
Deane, Gary	Broome Co. Sheriffs	50 Collier St. Binghamton, N.Y.
DeMeo, Michael	Town of Ramapo PD	237 Rt. 54 Suffern, N.Y.
Dorman, Joan	Syracuse PD	511 S. State St. Syracuse, N.Y.
Doyle, Joseph J.	Monroe Co.	1530 Highland Rochester, N.Y.
Fermano, Rocco	Solvay Police	1100 Woods Rd. Solvay, N.Y.
Gloude, Harry J.	Oswego Co. Sheriffs	R.D. 4, Box 5 Oswego, N.Y.
Goodrich, Walter A.	NYSP, Troop C	Sidney, N.Y.
Graves, Lloyd	No. Tonawanda Police	216 Payne Avenue No. Tonawanda, N.Y.
Hamlin, Bob	Motorola	4 Corporate Plaza Washington Avenue Extension Albany, N.Y.

Hammond, Lawrence	NYS Dept. of Parole	97 Central Avenue Albany, N.Y.
Heady, Charlie	NYSP, Troop F	Crystal Run Rd. Middletown, N.Y.
Hettrick, Allan	Suffolk Co. Sheriff's Office	1 Center Drive Riverhead, N.Y.
Horak, Bernie	Onondaga Co. EMS	4694 Central Syracuse, N.Y.
Hotaling, Tammie	Vestal PD	605 Vestal Parkway Vestal, N.Y.
Jones, Lyle W.	Otsego Co. Comm.	183 Main, Box 326 Cooperstown, N.Y.
Jorgensen, Craig	Pound Ridge PD	RR, Box 136 Westchester Avenue Pound Ridge, N.Y.
Kane, W. E.	Madison Co.	P. O. Box 577 Wampsville, N.Y.
Kelly, Lyle	Cortland PD	25 Court St. Cortland, N.Y.
Law, Gary	NYSP, Troop A	4525 W. Saila Batavia, N.Y.
Leifer, Morton	Chief of Police Assn. Rockland Co.	Clarkstown Rd. 10 Maple Avenue New York City, N.Y.
Lobdell, Lyn R.	NYSP, Troop B	Ray Brook, N.Y.
Maciarone, John	Chief, Depew PD	85 Mantone St. Depew, N.Y.
Majkut, R.	Albany Police	526 Central Avenue Albany, N.Y.
Mason, John H.	NYS OFPC	162 Washington Avenue Albany, N.Y.
McAndrew, Irving	DCJS	Albany, N.Y.
McBride, R. B.	SUNY Public Safety	Plaza Albany, N.Y.

McGarry, Frank	OFFPC	162 Washington Avenue Albany, N.Y.
McGovern, Jack	Niskayuna PD	1335 Balltown Road Schenectady, N.Y.
McLean, M. H.	Madison Co. Sheriff's	P. O. Box 16 Wampsville, N.Y.
Melicki, Ronald J.	NYS Thruway Authority	P. O. Box 189 Albany, N.Y.
Mihalko, Jim	NYS DOH Syracuse Regional	667 So. Salina Street Syracuse, N.Y.
Minihane, Jerry	NYSP Hdqtrs.	Albany, N.Y.
Moehle, C. F.	MRD Schenectady, N.Y.	419 Riverside Avenue Scotia, N.Y.
Nelson, Dick	Schenectady PD	531 Liberty Street Schenectady, N.Y.
Newman, Richard	NYSEMO	State Campus Albany, N.Y.
Nolan, Bill	NYSP, Troop T	Albany, N.Y.
Owens, David H., Sgt.	Montgomery Co. Sheriff's Dept.	Fonda, N.Y.
Paul, Tim	Baldwinsville PD OLEMRD	
Pierson, Robert	Orange County Sheriff's Office	40 Erie Street Goshen, N.Y.
Quarterly, Thomas M.	Ogden PD	2430 S. Union Street Spencerport, N.Y.
Roche, Thomas J.	Gates PD	1605 Buffalo Road Rochester, N.Y.
Roell, Charles	Westchester Co. Police	Saw Mill Parkway Hawthorne, New York
Sambuca, A.	NYS DOT	Building #5 Albany, N.Y.
Schabinger, Karl	DOCS	Building #2, State Campus Albany, N.Y.

SEMO Management	NYS Emergency Campus	Building #22, State Albany, N.Y.
Shearer, Douglas T.	NYSP, Troop G	504 Loudon Road Loudonville, N.Y.
Sleurs, Joe	Bethlehem PD	447 Delaware Avenue Delmar, N.Y.
Stevenson, David A.	Onondaga County Sheriff's Office	407 State Street Syracuse, N.Y.
Stile, Vincent R.	Suffolk County PD	Yaphank Avenue Yaphank, N.Y.
Strait, Jerry	NYS DOH	ESP Tower Albany, N.Y.
Swinney, Ron	Rome FD	158 Black River Rome, N.Y.
Wemple, Ray Coordinator	Schenectady Co. Law Enforcement MRD	1117 Roberta Road Schenectady, N.Y.
Williams, Douglas	General Electric	Albany, N.Y.
Zanta, Ray	Schenectady Co. Legislature	620 State Street Schenectady, N.Y.

- REGIONAL PLAN -

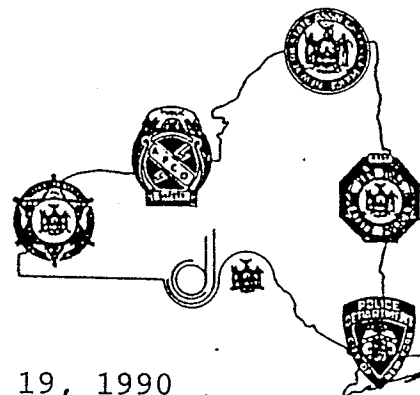
THE NEW YORK-ALBANY RADIO PLANNING COMMITTEE

(FCC-REGION 30)

PARTICIPATING AGENCIES:

APCO Frequency Coordination
City of Gloversville
City of Gloversville Fire Department
City of Ithaca Police Department
City of Johnstown Fire Department
City of Johnstown Police Department
City of Oneida Police Department
City of Rome Fire Department
City of Rome Police Department
Coopers & Lybrand
County of Clinton Fire / EMS
County of Fulton Sheriff Department
County of Oneida Sheriff Department
County of Otsego
County of Rensselaer Bureau of Emergency Services
County of Schenectady
County of Schenectady Law Enforcement Mobile Radio District
County of Schenectady Sheriff Department
County of Suffolk Police Department
County of Tompkins Fire
Federal Emergency Management Agency
General Electric Co. - Mobile Communications
General Electric Company - Corporate Research & Development Center
Motorola Communications & Electronics, Inc.
Mountain Lakes Emergency Medical Service Program
New York State Association of Fire Chiefs
State of New York Department of Criminal Justice Services
State of New York Department of Correctional Services
State of New York Department of Environmental Conservation
State of New York Department of Health
State of New York Department of Transportation
State of New York Division of State Police
State of New York Office of Fire Prevention and Control
State of New York State Emergency Management Office
Town of Bethlehem Police Department
Town of Colonie Police Department
Town of Glenville Police Department
Town of Niskayuna Fire District #1
Town of Niskayuna Police Department
Town of Rotterdam Police Department
Tri-State Radio Planning Committee (Region 8)
Veterans Administration Medical Center
Village of Scotia

NEW YORK STATEWIDE LAW ENFORCEMENT TELECOMMUNICATIONS COMMITTEE



March 19, 1990

REPRESENTING THE N. Y. STATE ASSOCIATION OF CHIEFS OF POLICE

Chief Thomas J. Roche
Gates Police Dept.
(Western Region) (716) 247-2260

Chief Harlin R. McEwen
Ithaca Police Dept.
(Central Region) (607) 272-3245

Chief John C. McClellan
Oneida Police Dept.
(Northern Region) (315) 363-9111

Chief Paul A. Munch
Mamaroneck Town Police Dept.
(Southern Region) (914) 381-6100

REPRESENTING THE N. Y. STATE SHERIFF'S ASSOCIATION

Sheriff Allen L. Capwell
Wyoming County Sheriff's Office
(Western Region) (716) 736-8133

Sheriff Daniel Reardon
Herkimer County Sheriff's Office
(Central Region) (315) 867-1167

Sheriff Keith Knowlton
St. Lawrence County Sheriff's Office
(Northern Region) (315) 379-2222

Sheriff Robert Thoubboron
Putnam County Sheriff's Office
(Southern Region) (914) 225-4300

REPRESENTING THE NEW YORK STATE POLICE

Captain J. D. Hoffman
New York State Police
(Western Region) (716) 398-2200

Lieutenant Patrick J. Leamy
New York State Police
(Northern Region) (518) 457-9466

Colonel Carl R. Baker
Dep. Supt. Administration
New York State Police
(Central Region) (518) 457-6621

Captain David R. Baker
New York State Police
(Southern Region) (914) 677-6321

REPRESENTING THE ASSOCIATED PUBLIC SAFETY COMMUNICATIONS OFFICERS, INC.

Vincent R. Stile
Suffolk County Police Dept.
(516) 345-6431

Gary E. Perkins
Monroe County Public Safety Comm.
(716) 473-6969

REPRESENTING THE NEW YORK CITY POLICE DEPARTMENT

Captain Michael Darby
New York City Police Dept.
(718) 476-7553

ADVISORY COUNSEL TO THE COMMITTEE

John Herriage
Deputy Commissioner, NYS Division of
Criminal Justice Services
(518) 457-6101

Irving E. McAndrew
MRD Program Director
NYS Division of Criminal Justice Services
(518) 457-8462

Mr. Paul F. Schonewolf
Chairman - Region 30
New York State Association of
Fire Chiefs
P.O. Box 445
Kinderhook, NY 12106

Dear Chairman Schonewolf:

The New York State Law Enforcement Telecommunications Committee (NYSLETC) has agreed to adopt and support the authority of the Regional Planning Committees of New York State with regards to the proper use of the 821/824-866/869 MHz National Radio Channels. NYSLETC provides a guardian watch status for the New York State Intersystem, high band National Police Channel and a low band Point-to-Point radio frequency in the State of New York. We have resolved to extend the coverage of our FCC registered Plan to incorporate the new 800 MHz National Channels.

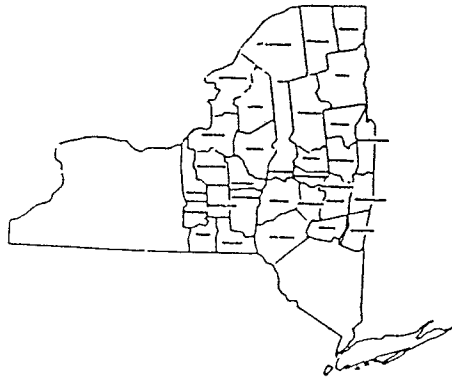
It is the intention of the NYSLETC Committee to work with each of the three New York State Radio Planning Committees to preserve the original intent of all national public safety channels. As proposed under the National Public Safety Plan for the new 800 MHz spectrum, the five National channels were to provide interoperability between public safety agencies for emergency two-way radio communications. NYSLETC will support that Plan and provide a guardian watch for the Regional Planning Committees.

By way of support to the Regional Planning Committees, NYSLETC will interface with those agencies that may misuse the channels, by correspondence and/or a visit from one of the NYSLETC membership. With mutual support it is hoped that we can preserve the ability to have clear emergency channels when the need is required.

Very truly yours,

A L Capwell

Allen L. Capwell
Acting Chairman
NYSLETC



NEW YORK - ALBANY (FCC Region 30)
800 MHz REGIONAL PLANNING COMMITTEE
Paul F. Schonewolf, Chairman
1430 Balltown Road
Schenectady, New York 12309

April 6, 1990

Mr. Henry I. DeGeneste
Chairman, Region 8
Tri-State Radio Planning Committee
One Path Plaza, 2nd Floor
Jersey City, New Jersey 07306

Dear Mr. DeGeneste:

Enclosed is a copy of the final draft of the Region 30 800 MHz Plan which has been approved by the committee for submission to the Federal Communications Commission.

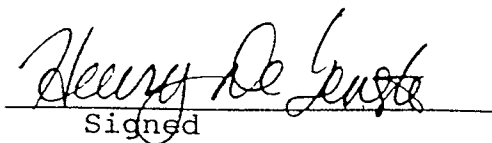
This Plan is frequency specific for those transmitter sites below the 100 KM Canadian Treaty Impact Zone, which impacts Region 30 along its northern border.

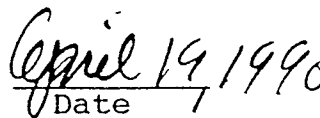
This Plan is submitted to you for coordination between our regions as required by the FCC.

Please review this Plan and its frequency assignment tables. If your Region concurs and has no conflicts with our Plan or assignments, so indicate by signing below and returning to me ~~not later than April 25, 1990~~. If we have not been contacted by you before that date, this Region will assume coordination is complete and will proceed with submitting our Plan to the FCC.

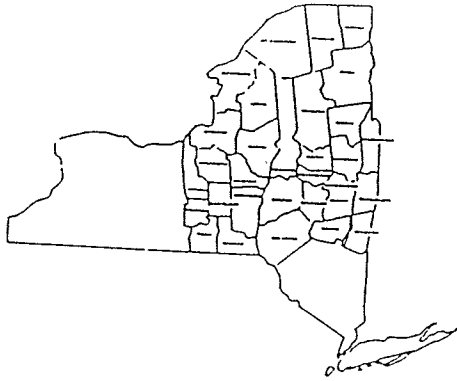

Paul F. Schonewolf

Region 8 has reviewed the New York - Albany (FCC Region 30) 800 MHz Regional Plan and this constitutes coordination of planning between Region 30 and Region 8.


Signed


Date

Henry I. DeGeneste
Chairman, Region 8



NEW YORK - ALBANY (FCC Region 30)
800 MHz REGIONAL PLANNING COMMITTEE
Paul F. Schönewolf, Chairman
1430 Balltown Road
Schenectady, New York 12309

April 6, 1990

Mr. Donald C. Nagle, Jr.
Chairman, Region 19
New England Region 800 MHz Planning Committee
c/o Metropolitan Police Department
20 Somerset Street
Boston, Massachusetts 02108

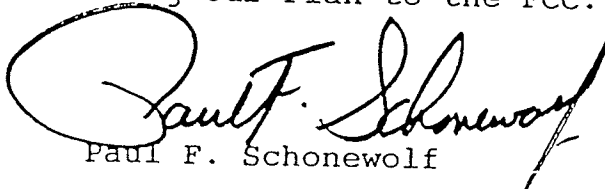
Dear Mr. Nagle:

Enclosed is a copy of the final draft of the Region 30 800 MHz Plan which has been approved by the committee for submission to the Federal Communications Commission.

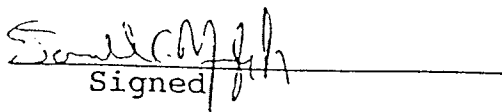
This Plan is frequency specific for those transmitter sites below the 100 KM Canadian Treaty Impact Zone, which impacts Region 30 along its northern border.

This Plan is submitted to you for coordination between our regions as required by the FCC.

Please review this Plan and its frequency assignment tables. If your Region concurs and has no conflicts with our Plan or assignments, so indicate by signing below and returning to me not later than April 25, 1990. If we have not been contacted by you before that date, this Region will assume coordination is complete and will proceed with submitting our Plan to the FCC.

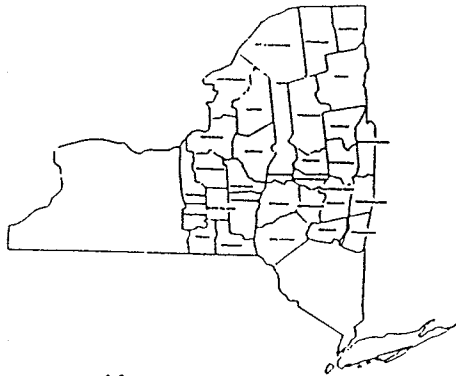

Paul F. Schönewolf

Region 19 has reviewed the New York - Albany (FCC Region 30) 800 MHz Regional Plan and this constitutes coordination of planning between Region 30 and Region 19.


Signed

04/23/90
Date

Donald C. Nagle
Chairman, Region 19



NEW YORK - ALBANY (FCC Region 30)
800 MHz REGIONAL PLANNING COMMITTEE
Paul F. Schonewolf, Chairman
1430 Balltown Road
Schenectady, New York 12309

April 6, 1990

Mr. Thomas E. Gibson
Chairman, Region 28
800 MHz Planning Committee
2122 Sierra Road
Plymouth Meeting, Pennsylvania 19462

Dear Mr. Gibson:

Enclosed is a copy of the final draft of the Region 30 800 MHz Plan which has been approved by the committee for submission to the Federal Communications Commission.

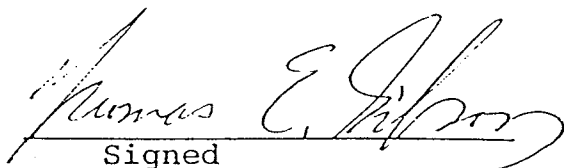
This Plan is frequency specific for those transmitter sites below the 100 KM Canadian Treaty Impact Zone, which impacts Region 30 along its northern border.

This Plan is submitted to you for coordination between our regions as required by the FCC.

Please review this Plan and its frequency assignment tables. If your Region concurs and has no conflicts with our Plan or assignments, so indicate by signing below and returning to me not later than April 25, 1990. If we have not been contacted by you before that date, this Region will assume coordination is complete and will proceed with submitting our Plan to the FCC.

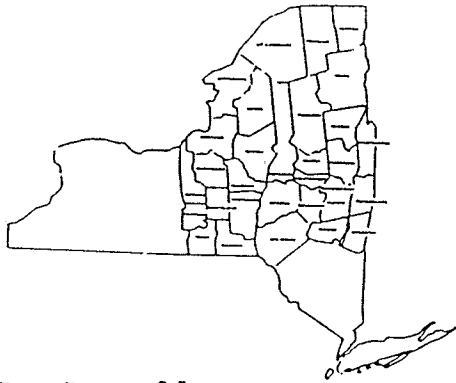

Paul F. Schonewolf

Region 28 has reviewed the New York - Albany (FCC Region 30) 800 MHz Regional Plan and this constitutes coordination of planning between Region 30 and Region 28.


Signed

4/22/90
Date

Thomas E. Gibson
Chairman, Region 28



NEW YORK - ALBANY (FCC Region 30)
800 MHz REGIONAL PLANNING COMMITTEE
Paul F. Schonewolf, Chairman
1430 Balltown Road
Schenectady, New York 12309

April 6, 1990

Mr. Allen L. Capwell
Chairman, New York - Buffalo Region 55
800 MHz Regional Planning Committee
145 North Main Street
Warsaw, New York 14569-1196

Dear Sheriff Capwell:

Enclosed is a copy of the final draft of the Region 30 800 MHz Plan which has been approved by the committee for submission to the Federal Communications Commission.

This Plan is frequency specific for those transmitter sites below the 100 KM Canadian Treaty Impact Zone, which impacts Region 30 along its northern border.

This Plan is submitted to you for coordination between our regions as required by the FCC.

Please review this Plan and its frequency assignment tables. If your Region concurs and has no conflicts with our Plan or assignments, so indicate by signing below and returning to me not later than April 25, 1990. If we have not been contacted by you before that date, this Region will assume coordination is complete and will proceed with submitting our Plan to the FCC.


Paul F. Schonewolf

Region 55 has reviewed the New York - Albany (FCC Region 30) 800 MHz Regional Plan and this constitutes coordination of planning between Region 30 and Region 55.

Signed

Date

Allen L. Capwell
Chairman, Region 55

P 064 570 119

RECEIPT FOR CERTIFIED MAIL

NO INSURANCE COVERAGE PROVIDED
NOT FOR INTERNATIONAL MAIL

(See Reverse)

Sent to <i>Allen Capwell</i>	
Street and No. <i>145 No. Main St.</i>	
P.O., State and ZIP Code <i>Warsaw, N.Y. 14569-1196</i>	
Postage	\$2.40
Certified Fee	.45
Special Delivery Fee	
Restricted Delivery Fee	
Return Receipt for which fee was paid	
Return Receipt for which fee was paid	.40
TOTAL Postage and Fee	\$4.15
Postmark <i>WARSAW NY 9 APR 1990</i>	

PS Form 3800, June 1985

SENDER: Complete Items 1 and 2 when additional services are desired, and complete items 3 and 4.
Put your address in the "RETURN TO" Space on the reverse side. Failure to do this will prevent this card from being returned to you. The return receipt fee will provide you the name of the person delivered to and the date of delivery. For additional fees the following services are available. Consult postmaster for fees and check box(es) for additional service(s) requested.

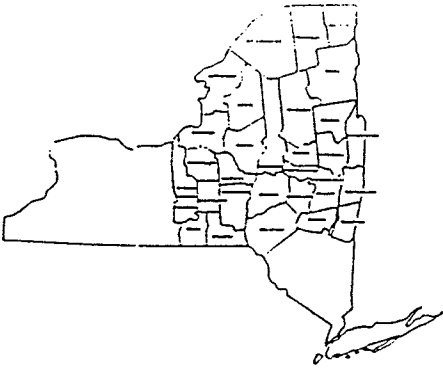
1. ☐ Show to whom delivered, date, and addressee's address. (Extra charge)
2. ☐ Restricted Delivery (Extra charge)

3. Article Addressed to: <i>Allen Capwell</i> <i>145 No. Main St.</i> <i>Warsaw, N.Y.</i> <i>14569-1196</i>	4. Article Number <i>P 064 570 119</i>
5. Signature — Address <input checked="" type="checkbox"/> <i>Susan R. Andrew</i>	Type of Service: <input type="checkbox"/> Registered <input type="checkbox"/> Insured <input checked="" type="checkbox"/> Certified <input type="checkbox"/> COD <input type="checkbox"/> Express Mail <input type="checkbox"/> Return Receipt for Merchandise
6. Signature — Agent <input checked="" type="checkbox"/>	Always obtain signature of addressee or agent and DATE DELIVERED .
7. Date of Delivery <i>4-9-90</i>	8. Addressee's Address (ONLY if requested and fee paid)

PS Form 3811, Mar. 1988

* U.S.G.P.O. 1988-212-865

DOMESTIC RETURN RECEIPT



NEW YORK - ALBANY (FCC Region 30)
800 MHz REGIONAL PLANNING COMMITTEE
Paul F. Schonewolf, Chairman
1430 Balltown Road
Schenectady, New York 12309

May 25, 1990

Ms. Donna R. Searcy, Secretary
Federal Communications Commission
1919 M Street N.W.
Washington D.C. 20554

Dear Ms. Searcy:

Reference is made to General Docket 87-112 in the matter of Development and Implementation of a Public Safety National Plan.

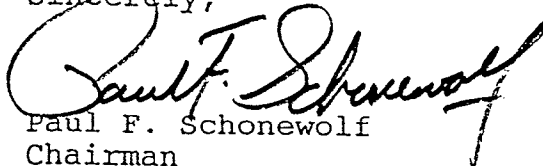
Enclosed herewith is an original and 6 copies of the Public Safety Communications Plan for the 31 County area of upstate New York identified as Region 30, New York - Albany.

This Plan is submitted in accordance with 90.16 and 90.34 of the Commission's Rules and Regulations, and General Docket 87-112. The United States - Canadian Treaty, regarding the assignment of channels involved in this plan, will impact this Region. It is anticipated that this Regional Plan will be modified in accordance with the final results of that Treaty negotiation.

The Regional Planning Committee wishes to applaud the Commission for its foresight in establishing local planning committees to assist the Commission in the channel allocation process.

Please feel free to contact this committee at any time, should you have any questions, or need any additional information.

Sincerely,


Paul F. Schonewolf
Chairman

C: Ms. Maureen Cesaitis, PRB
Mr. Fred Thomas, OET



NEW YORK - ALBANY (FCC Region 30)
800 MHz REGIONAL PLANNING COMMITTEE
Paul F. Schonewolf, Chairman
1430 Balltown Road
Schenectady, New York 12309

August 14, 1990

Ms. Donna R. Searcy, Secretary
Federal Communications Commission
1919 M Street N.W.
Washington D.C. 20554

Dear Ms. Searcy:

Reference is made to General Docket 87-112 in the matter of Development and Implementation of a Public Safety National Plan, and the Public Safety Communications Plan for Region 30, New York - Albany, previously submitted to the Commission by cover letter dated May 25, 1990.

Enclosed herewith is an original and 6 copies of revised pages 17, 22, 23, and 25 to replace pages of the same numbers in the Region 30 Plan original and 6 copies previously submitted to you.

These revised pages are submitted as a result of clarification discussions with Commission Staff and members of this Regional Planning Committee.

This Committee has worked diligently to meet the needs of all eligibles within Region 30. With spectrum efficiency being a very critical issue, prospective licensees will have to look differently at 800 MHz systems from their previous modes of operation. Constructing equivalent radio system coverage in 800 MHz, and the development of sophisticated computerized trunking systems to improve spectral efficiency, will significantly increase acquisition, installation and operating costs from those of previous lower frequency systems. Given these factors, the Committee believes that this Plan's channel allocations, below the Canadian Treaty Impact Zone, will meet the needs of all eligibles. Whether the same can be said for channel allocations above the Canadian Treaty Impact Zone remains to be seen.

Sincerely,


Paul F. Schonewolf
Chairman

C: Ms. Maureen Cesaitis, PRB
Mr. Fred Thomas, OET



PUBLIC NOTICE

FEDERAL COMMUNICATIONS COMMISSION
1919 M STREET N.W.
WASHINGTON, D.C. 20554

DA 90-1140

News media information 202/632-5050. Recorded listing of releases and texts 202/632-0002.

4587

August 29, 1990

COMMENTS INVITED ON ALBANY AREA REGIONAL PUBLIC SAFETY PLAN

The Commission has received the public safety radio communications plan for the Albany Area (Region 30).

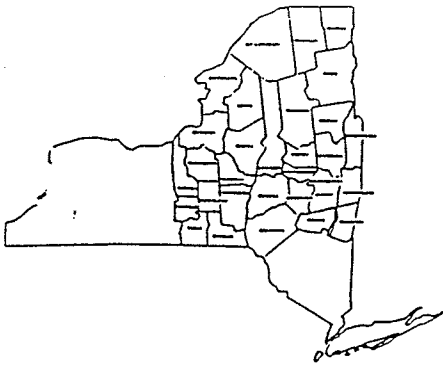
In accordance with the Commission's Report and Order in General Docket No. 87-112 implementing the Public Safety National Plan, parties are hereby given thirty days from the date of Federal Register publication of this public notice to file comments and fifteen days to reply to any comments filed. (See Report and Order, General Docket No. 87-112, 3 FCC Red 905 (1987), at paragraph 54.)

In accordance with the Commission's Memorandum Opinion and Order in General Docket No. 87-112, Region 30 consists of: St. Lawrence, Franklin, Clinton, Jefferson, Lewis, Essex, Oswego, Cayuga, Onondaga, Madison, Oneida, Herkimer, Montgomery, Fulton, Hamilton, Warren, Saratoga, Washington, Schenectady, Rensselaer, Columbia, Greene, Albany, Schoharie, Delaware, Otsego, Chenango, Broome, Cortland, Tompkins and Tioga Counties. (See General Docket No. 87-112, 3 FCC Red 2113 (1988).)

Comments should be clearly identified as submissions to **General Docket No. 90-394, Albany Area - Region 30**, and commenters should send an original and five copies to the Secretary, Federal Communications Commission, Washington, DC 20554.

Questions regarding this public notice may be directed to Maureen Cesaitis, Private Radio Bureau, (202) 632-6497 or Fred Thomas, Office of Engineering and Technology, (202) 653-8112.

- FCC -



NEW YORK - ALBANY (FCC Region 30)
800 MHz REGIONAL PLANNING COMMITTEE
Paul F. Schonewolf, Chairman
1430 Balltown Road
Schenectady, New York 12309

April 2, 1991

Ms. Donna R. Searcy, Secretary
Federal Communications Commission
1919 M Street N.W.
Washington D.C. 20554

RE: Public Safety Communications Plan
Region 30, New York - Albany Area
General Docket: No. 90-394

Dear Ms. Searcy:

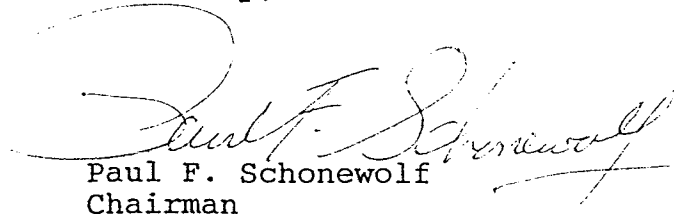
Reference is made to General Docket 87-112 in the matter of Development and Implementation of a Public Safety National Plan, and the Public Safety Communications Plan for Region 30, New York - Albany, which was placed on public notice as General Docket No. 90-394.

FCC staff has requested that Region 30 submit information as to the quantity of unused channels resulting from the allotment process for that part of the Region which is below the Canadian Treaty Impact Zone (100 KM. from the border).

The number of channels not allotted in the plan, as of the date submitted, is 81.

My telephone number, which was inadvertently omitted from the Plan, is (518) 381-4832.

Sincerely,


Paul F. Schonewolf
Chairman

C: Ms. Elizabeth Woolford, PRB



DIVISION COMMUNICATIONS

FAX: (202) 634-7651

TO: Ms. Elizabeth Woolford (202) 632-6497
FCC PRB

FROM: Robert F. Schlieman
Region 30 Planning Committee

Number of pages transmitted including this cover page: 3

Problems in transmitting call:

Division Communications Section - (518) 457-6811

Fax Number - (518) 457-3207

COMMENTS:

RE: 4/2/91 letter - 81 channels not allotted in Plan.

4/18/91

CHAN CNT	CHAN NO.	COMMENT
----	-----	-----
1	603	RESERVED FOR REGION-WIDE GUARD OF 602
2	604	
3	605	
4	625	
5	631	
6	635	
7	636	
8	637	
9	638	
10	641	RESERVED FOR REGION-WIDE GUARD OF 640
11	642	
12	643	
13	645	
14	654	
15	659	
16	666	
17	668	
18	673	
19	674	
20	675	
21	676	RESERVED FOR REGION-WIDE GUARD OF 678
22	679	
23	680	
24	681	
25	683	
26	690	
27	693	
28	695	
29	698	
30	700	
31	701	
32	703	
33	704	
34	705	
35	707	
36	708	
37	709	
38	710	
39	711	
40	712	
41	713	
42	714	
43	717	RESERVED FOR REGION-WIDE GUARD OF 716
44	718	
45	719	
46	720	

REGION 30 UNALLOTTED CHANNELS

4/18/91

CHAN CNT	CHAN NO.	COMMENT
---	-----	-----
47	722	
48	724	
49	726	
50	727	
51	729	
52	733	
53	737	
54	739	
55	749	
56	750	
57	751	
58	752	
59	755	RESERVED FOR REGION-WIDE GUARD OF 754
60	756	
61	757	
62	762	
63	770	
64	772	
65	787	
66	788	
67	789	
68	790	
69	791	RESERVED FOR REGION-WIDE GUARD OF 792
70	793	RESERVED FOR REGION-WIDE GUARD OF 792, 794
71	795	RESERVED FOR REGION-WIDE GUARD OF 794
72	796	
73	797	
74	802	
75	806	
76	808	
77	810	
78	819	RESERVED FOR REGION-WIDE GUARD OF 820
79	821	RESERVED FOR REGION-WIDE GUARD OF 820, 822
80	823	RESERVED FOR REGION-WIDE GUARD OF 822, 824
81	825	RESERVED FOR REGION-WIDE GUARD OF 824, 826

FEDERAL COMMUNICATIONS COMMISSION
Washington, D.C. 20554

June 3, 1991

IN REPLY REFER TO:

7330-03

Mr. Paul F. Schonewolf
Chairman, Region 30
1430 Balltown Road
Schenectady, New York 12309

Dear Mr. Schonewolf:

We are pleased to advise you that we have formally accepted the Region 30 Public Safety Plan. We both wish to commend you on the tremendous amount of effort that went into its formulation. You and your committee are to be congratulated.

With the acceptance of this plan, we look forward to the licensing of the 230 channels in the 821-824/866-869 MHz bands and to the establishment of part of the national mutual aid network that will provide a means for inter-communication among the public safety agencies throughout the fifty-five regions.

On October 22, 1990, the two Arrangements that were signed between the United States and Canada became effective. The Albany Plan may need to be modified to conform to these Arrangements. Enclosed for your reference is a copy of the Order that appeared in the Federal Register on October 22, 1990, concerning the use of 821-824/866-869 MHz bands in the vicinity of the United States/Canada border. 5 FCC Red 5793 (1990).

Again, we congratulate you and look forward to the continued efforts of your Committee on behalf of the Albany public safety community.

Sincerely,



Ralph A. Haller
Chief, Private Radio Bureau



Thomas P. Stanley
Chief Engineer

Enclosure

Copy to: Associated Public-Safety Communications Officers, Inc.
Chairman, Region 19 Regional Plan Update Committee
Chairman, Region 8 Regional Plan Update Committee
Chairman, Region 28 Regional Plan Update Committee
Chairman, Region 55 Public Safety Planning Committee

Before the
Federal Communications Commission
Washington, D.C. 20554

FEDERAL COMMUNICATIONS COMMISSION

GEN. Docket No. 90-394

In the Matter of

Albany Region Public Safety Plan

Ralph A. Haller
Chief, Private Radio Bureau

Thomas P. Stanley
Chief Engineer

ORDER

Adopted: May 24, 1991;

Released: May 31, 1991

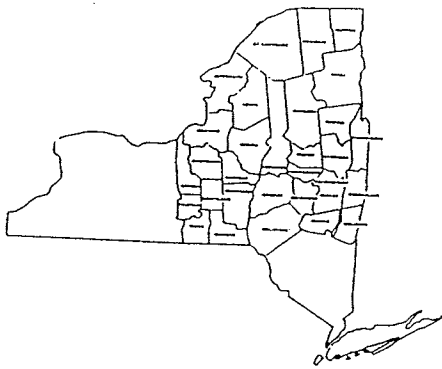
By the Chief, Private Radio Bureau and the Chief Engineer:

1. On June 1, 1990, Region 30 (Albany) submitted its Public Safety Plan to the Commission for review. Region 30 is comprised of Albany, Broome, Cayuga, Chenango, Clinton, Columbia, Cortland, Delaware, Essex, Franklin, Fulton, Greene, Hamilton, Herkimer, Jefferson, Lewis, Madison, Montgomery, Oneida, Onondaga, Oswego, Otsego, Rensselaer, St. Lawrence, Saratoga, Schenectady, Schoharie, Tioga, Tompkins, Warren, and Washington counties. The plan sets forth the guidelines to be followed in allotting spectrum to meet current and future mobile communications requirements of the public safety and special emergency entities operating in its region. On August 20, 1990, Region 30 filed revisions to the plan, based on conversations with the Commission's staff and on April 22, 1991, the Region furnished the Commission with a list of vacant channels.

2. The Region 30 Plan was placed on Public Notice for comments, 55 FR 36701 (Sept. 6, 1990). The Commission received no comments in this proceeding.

3. We have reviewed the plan submitted for Region 30 and find that it conforms with the National Public Safety Plan. The plan includes all the necessary elements specified in the *Report and Order* in Gen. Docket No. 87-112, 3 FCC Rcd 905 (1987), and satisfactorily provides for the current and projected mobile communications requirements of the public safety and special emergency entities in the Albany area. We note, however, that the channel allotments contained in the Albany Plan may need to be modified to conform to the Arrangements between the United States and Canada, effective October 22, 1990, concerning use of the 821-824/866-869 MHz bands, 5 FCC Rcd 5793 (1990).

4. Accordingly, IT IS ORDERED that the Public Safety Radio Plan for Region 30 IS ACCEPTED, subject to the provisions of paragraph 3 above. Furthermore, licensing of the 821-824/866-869 MHz band in Region 30 may commence immediately.



NEW YORK - ALBANY (FCC Region 30)
800 MHz REGIONAL PLANNING COMMITTEE
Paul F. Schonewolf, Chairman
1430 Balltown Road
Schenectady, New York 12309
July 24, 1995

Ms. Kathryn Hosford
Public Safety Plan Administrator
Wireless Radio Bureau
Federal Communications Commission
2025 M Street, N.W.
Washington, D.C. 20554

RE: Region 30 Public Safety Plan Amendments
(General Docket 90-394)

Dear Ms. Hosford:

At its last meeting, the Albany Region Public Safety Planning Committee established a Regional Plan Update Committee - as provided for in the Plan, and acted on amendments to the Regional Plan and its allotment table for Region 30.

In its notification of Plan Acceptance (General Docket 90-394) letter of June 3, 1991, the FCC advised that, with the signing of "Arrangements" between the United States and Canada, 5 FCC Rcd 5793 (1990), the Region 30 Plan may need to be modified to conform to these "Arrangements".

In fact, seven (7) Counties are partially within, and 6 Counties are totally within, the 100 KM. Sharing Zone. As identified in the opening two paragraphs of "CHANNEL ASSIGNMENTS BY APPLICANT / COUNTY" on page 34 of the Plan, the original channel plan was developed prior to the "Arrangements" noted above, and had attempted to illustrate a method of international shared use of this spectrum by applying the same demographic methods to each.

For that reason, the Region 30 Planning Committee feels that it is appropriate that its channel allotment plan should be reviewed and revised. Certain channels in the upper end of this spectrum were allotted for region-wide use by State Agencies or for specific classes of eligibles, and included low power (7.5 Watts maximum ERP) restricted use above channel 819 (guard) to and including channel 830. At the present time, only channels in these region-wide allotments have been licensed in Region 30.

The Planning Committee does not desire to change these particular region-wide channel allotments, but rather, to redistribute the other channels above 822/867.500 MHz - Channel 717, preferentially to those Counties which are within 140 KM. of the Canadian border, thereby impacted by the "Arrangements" with Canada, and more particularly, to redistribute those channels above 823/868.100 MHz - Channel 759, preferentially to those Counties within 100 KM. of the Canadian border. At the same time, considering changes to the channel allotment plans of Regions 8, 19, 28 and 36, the channel allotments for the remaining areas of Region 30 will also be reviewed and revised as appropriate.

Ms. Kathryn Hosford
Federal Communications Commission
July 24, 1995
Page 2

In the meanwhile, the City of Auburn, Cayuga County, with fixed station transmitters proposed within the 100 KM. Sharing Zone, has requested a 5 channel trunking allotment. Geographical features of distance and topography to the South of the City of Auburn prevent any impact in the Commonwealth of Pennsylvania (Regions 28 and 36) and the Tri-State - New York Metropolitan Area (Region 8). Region 55 has sent a letter of concurrence, which is attached. Based on this information, incorporated in the City of Auburn's request of August 29, 1994, FCC, on September 7, 1994, granted the City of Auburn Special Temporary Authority to perform system test on these channels.

The Committee has considered their request, reviewed the intervening terrain obstruction and distance on signal impacts with adjoining regions, and finds: 1) it is consistent with the Committee's intent to redistribute the channel allotment table to conform with the Canadian Arrangements; 2) concurrence has been received from Region 55; and 3) channels should therefore be allotted to the City of Auburn, Cayuga County, and the channel allotment table of the Region 30 Plan revised accordingly, as follows:

<u>Channel</u>	<u>MHz</u>
768	823/868.2125
786	823/868.4375
797	823/868.5750
811	823/868.7500
815	823/868.8000

The Region 30 Planning Committee through its Regional Plan Update Committee will proceed with the review and revision, as appropriate, of the remainder of the channel allotment table - as previously identified, and expects to submit the results of that to the FCC later this year.

In other action, the Regional Planning Committee amended its Plan on page 7, the second paragraph under "Regional Plan Update Committee" and adding a third paragraph, both to read as follows (emphasis added to identify change):

"The standing membership of the RPUC shall consist of the APCO designated local frequency advisor for the Regional Planning Area, two members each representing the four geographic areas of Region 30 - Albany, Binghamton, Syracuse, and Plattsburgh (8 members). From time to time, the RPUC Chairman may appoint a member(s)-at-large. Subsequent to the initial RPUC appointments, all future RPUC appointments will be subject to majority approval of current RPUC membership. In no case shall any radio service have a voting membership greater than 49%."

"Subject to majority approval, other individuals may serve on the RPUC only in a non-voting status. The RPUC Chairman may exclude the presence of such members during any RPUC executive session."

Ms. Kathryn Hosford
Federal Communications Commission
July 24, 1995
Page 3

The Region 30 Regional Plan Update Committee members are:

APCO designated local frequency advisor:

Gary Perkins - APCO/NNY

Albany (Central Area):

Paul Schonewolf - Fire
Niskayuna Fire District #1

Robert Schlieman - Police
New York State Police

Binghamton (Southern Area):

Harlin McEwen - Police
Ithaca Police Department

Lyle Jones - Local Gov't
Otsego County Emergency Services

Syracuse (Western Area):

John McClellan - Police
Oneida Police Department

Walt Eccles - Local Gov't
New York State Thruway Authority

Plattsburgh (Northern Area):

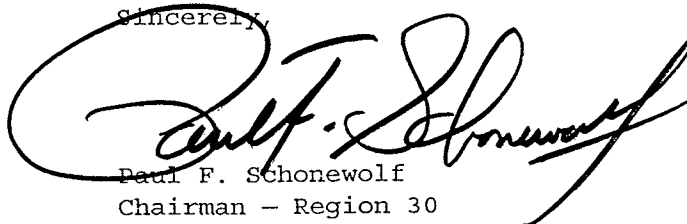
Jim King - Fire
Clinton County Fire Coordinator

Keith Knowlton - Police
St. Lawrence County Sheriff

Please include these items in the public file for Region 30, General Docket 90-394.

If you have any questions, please contact me by telephone at (518) 381-4832 or FAX at (518) 381-4833, or Robert Schlieman by telephone at (518) 457-9478 or FAX at (518) 457-3207.

Sincerely,

A large, stylized handwritten signature in black ink, which appears to read "Paul F. Schonewolf". The signature is written over the typed name and title.

Paul F. Schonewolf
Chairman - Region 30

Enclosure - Region 55 Concurrence

C: Regional Planning Committee Chairmen - Regions 8, 19, 28, 36 and 55.
Ali Shahnam - APCO AFC, Inc.
Douglas R. Dickinson - Regional Plan Database.



County of Erie

DENNIS T. GORSKI
COUNTY EXECUTIVE

DEPARTMENT OF CENTRAL POLICE SERVICES
JOHN N. CARDARELLI, COMMISSIONER

August 25, 1994

Robert F. Schlieman
New York State Police
Albany, New York

Reference your fax of August 24, 1994, we understand that the proposal would not result in interference to "Pool" allotments in Erie County and agree with the assessment to use these channels in the City of Auburn, New York.

Harold R. Miller
Chairman
Region 55 Planning Committee

Regional Planning Committee - FCC Region 30
 Technical Subcommittee analysis:

City of Auburn, Cayuga County, New York, site reference:
 42-55-43 N, 76-33-40 W

	<u>Channel</u>	<u>Frequency</u>	<u>Present User</u>	<u>Distance Miles</u>
	767	868.2000 -adj	Connecticut, State of	197
>	768	868.2125 MHz	Pennsylvania, Cmwlt. of	207
	769	868.2250 +adj	Pennsylvania, Cmwlt. of	169
	785	868.4250 -adj	Pennsylvania, Cmwlt. of	136
>	786	868.4375 MHz	Pennsylvania, Cmwlt. of	204
	787	868.4500 +adj	[nothing found]	
	796	868.5625 -adj	Pennsylvania, Cmwlt. of	144
>	797	868.5750 MHz	Pennsylvania, Cmwlt. of	131
	798	868.5875 +adj	Reading, PA, City of	182
	810	868.7375 -adj	Pennsylvania, Cmwlt. of	110
>	811	868.7500 MHz	Pennsylvania, Cmwlt. of	169
	812	868.7625 +adj	Pennsylvania, Cmwlt. of	152
	814	868.7875 -adj	Pennsylvania, Cmwlt. of	104
>	815	868.8000 MHz	Suffolk, NY, Co. of	218
	816	868.8125 +adj	Pennsylvania, Cmwlt. of	192

Data is from APCO Database, 8/23/94, by Gary Perkins - APCO/SNY, Member - Technical Subcommittee of the Region 30 Planning Committee ;

The City of Auburn, NY's proposed 5 dBuV/M mean signal coverage (co-channel protection contour) will not extend into Pennsylvania (Regions 28 and 36).

Some of the selected channel allotments for the City of Auburn, NY are co-channel with "Pool" allotments to Erie County in Region 55, however its 5 dBuV/M mean signal coverage will not extend as far West as Erie County.

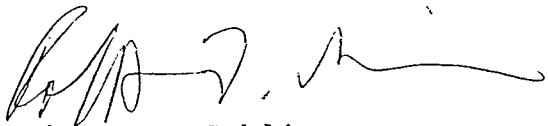
The entire Region 30 plan is currently under review, including the requirements of the United States - Canadian Agreement (Agreement) for sharing spectrum.

Except for channels which have already been licensed, the County "Pool" allotments previously made are subject to change as a result of this review.

Therefore, none of the instant channel allotments proposed for the City of Auburn, NY, which would have been co-channel or adjacent channel to any previously allotted County "Pool" channels in the original Region 30 Plan, will present any problem.

The channels and operations proposed for the City of Auburn, NY are compliant with the Agreement.

Considering the above facts, it is recommended that channels 768, 786, 797, 811, and 815 be allotted to the City of Auburn, Cayuga County, NY for use within Cayuga County, and that these changes to the Region 30 Channel Allotment Table be filed with the Federal Communications Commission as an amendment to the Region 30 Plan.



8/25/94

Robert F. Schlieman
Chairman - Technical Subcommittee
Region 30 Planning Committee

SEE 8/25/94 FAX TRANSMITTED LETTER OF
APPROVAL BY REGION 55 CHAIRMAN,
ATTACHED.



Federal Communications Commission
Washington, D.C. 20554

November 22, 1995

*Bob
F-12*

In Reply Refer To:
2000F/DB


Paul F. Schonewolf, Chairman
Region 30
800 MHz Regional Planning Committee
1430 Balltown Road
Schenectady, New York 12309

Dear Mr. Schonewolf:

On July 24, 1995, the Commission received an amendment from Region 30 requesting the redistribution of 5 channel trunking assignments (Channels 768, 786, 797, 811, and 815) for the City of Auburn, Cayuga County, New York. The request indicates that the amendment is consistent with the U.S./Canadian Arrangement and will not affect adjacent Regions. On November 3, 1995, the last adjacent Region filed concurrence with the amendment.

We have reviewed the amendment and found it to be in accord with the U.S./Canadian Arrangement, 5 FCC Rcd 5793 (1990). With concurrences from Regions 8, 19, 28 and 55, the revision is considered a minor amendment. Therefore, the amendment need not be placed on public notice for comment and is accepted as submitted. The Secretary's office will place your amendment of the Region 30 plan in the official docket file where it is available to the public. For further information, contact Deborah Behlin of my staff at (202) 418-0680.

Sincerely,


for Robert H. McNamara
Chief, Private Wireless Division